

## CDT1 polyclonal antibody

Catalog: BS90288

Host: Rabbit

Reactivity: Human

### Background:

Human Cdt1 is a nuclear localizing replication initiation factor that is expressed only during the G1 and S phases of the cell cycle. In conjunction with Cdc18, Cdt1 is required to load the MCM protein Cdc21 onto chromatin at the end of mitosis which is necessary to initiate DNA replication. After S-phase onset, Cdt1 protein levels decrease and are barely detectable in cells in early S-phase or G2. However, Cdt1 mRNA is expressed in S-phase-arrested cells, and its levels do not change dramatically during the cell cycle, suggesting that proteolytic degradation rather than transcriptional controls ensure proper accumulation of Cdt1. Cdt1 can associate with the DNA replication inhibitor geminin, which is present in the S and G2 phases of the cell cycle. Inhibition of DNA replication by geminin in cell-free DNA replication extracts can be reversed by the addition of excess Cdt1. Geminin may be responsible for preventing inappropriate origin firing by targeting Cdt1.

### Product:

Rabbit IgG, 1mg/ml in PBS with 0.02% sodium azide, 50% glycerol, pH7.2

### Molecular Weight:

60 kDa

### Swiss-Prot:

Q9H211(Human)

### Purification&Purity:

ProA affinity purified

### Applications:

WB:1:500-1:1,000

IHC:1:25-1:50

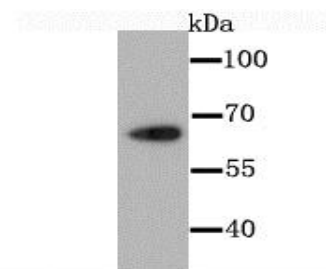
### Storage&Stability:

Store at +4 °C after thawing. Aliquot store at -20 °C or -80 °C. Avoid repeated freeze / thaw cycles.

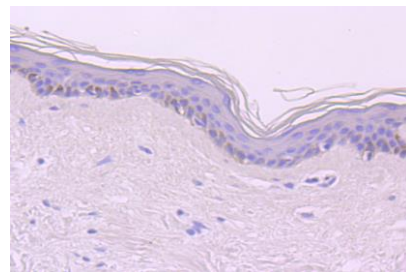
### Specificity:

CDT1 polyclonal antibody detects endogenous levels of CDT1 protein.

### DATA:



Western blot analysis of CDT1 on Hela cell using anti-CDT1 antibody at 1/1,000 dilution.



Immunohistochemical analysis of paraffin-embedded human skin tissue using anti-CDT1 antibody. Counter stained with hematoxylin.

### Note:

For research use only, not for use in diagnostic procedure.

### Bioworld Technology, Inc.

Add: 1660 South Highway 100, Suite 500 St. Louis Park, MN 55416, USA.

Email: [info@bioworld.com](mailto:info@bioworld.com)

Tel: 6123263284

Fax: 6122933841

### Bioworld technology, co. Ltd.

Add: No 9, weidi road Qixia District Nanjing, 210046, P. R. China.

Email: [info@biogot.com](mailto:info@biogot.com)

Tel: 0086-025-68037686

Fax: 0086-025-68035151