

CENPC polyclonal antibody

Catalog: BS90294

Host: Rabbit

Reactivity: Human

BackGround:

A replicated chromosome includes two kinetochores that control chromosome segregation during mitosis. The evolutionarily conserved Centromere Protein-C, CENP-C, is a kinetochore assembly protein. CENP-C is located on the fibers of the kinetochore and constitutes a kinetochore organizing center that tightly associates with DNA. CENP-C is necessary for the formation of a functional centromere, which indicates that CENP-C is important for mitotic progression. In addition, CENP-C is lost from centromeres during herpes simplex virus 1 infection, causing substantial structural changes in the kinetochore, which suggests that the structure of CENP-C is regulated during the cell cycle.

Product:

Rabbit IgG, 1mg/ml in PBS with 0.02% sodium azide, 50% glycerol, pH7.2

Molecular Weight:

107 kDa

Swiss-Prot:

Q03188(Human)

Purification&Purity:

ProA affinity purified

Applications:

WB:1:500-1:2,000

ICC:1:50-1:200

IHC:1:50-1:200

FC:1:50-1:200

IP:1:10-1:50

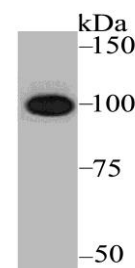
Storage&Stability:

Store at +4 °C after thawing. Aliquot store at -20 °C. Avoid repeated freeze / thaw cycles.

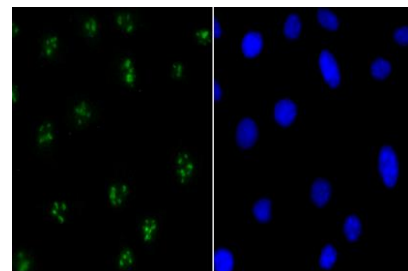
Specificity:

CENPC polyclonal antibody detects endogenous levels of CENPC protein.

DATA:



Western blot analysis of CENPC on K562 cell lysate using anti-CENPC antibody at 1/1,000 dilution.



ICC staining CENPC in SH-SY-5Y cells (green). The nuclear counter stain is DAPI (blue). Cells were fixed in paraformaldehyde, permeabilised with 0.25% Triton X100/PBS.

Note:

For research use only, not for use in diagnostic procedure.

Bioworld Technology, Inc.

Add: 1660 South Highway 100, Suite 500 St. Louis Park, MN 55416, USA.

Email: info@bioworld.com

Tel: 6123263284

Fax: 6122933841

Bioworld technology, co. Ltd.

Add: No 9, weidi road Qixia District Nanjing, 210046, P. R. China.

Email: info@biogot.com

Tel: 0086-025-68037686

Fax: 0086-025-68035151