

CHD1L polyclonal antibody

Catalog: BS90297

Host: Rabbit

Reactivity: Human, Mouse

BackGround:

CHD1L (Chromodomain helicase DNA-binding protein 1-like) is a 897 amino acid protein encoded by the human gene CHD1L. The CHD family of proteins are ATP-dependent chromatin remodeling enzymes, which combine chromodomains, with SWI2/SNF2 ATPase/helicase motifs and DNA-binding capability. Chromodomains are protein regions of about 40-50 amino acid residues found in proteins associated with chromatin remodeling and manipulation. The domain is highly conserved among both plants and animals and is found in a large variety of proteins from many genomes. CHD1L and CHD1 share most homology within two internal helicase domains.

Product:

Rabbit IgG, 1mg/ml in PBS with 0.02% sodium azide, 50% glycerol, pH7.2

Molecular Weight:

101/90 kDa

Swiss-Prot:

Q86WJ1(Human)

Purification&Purity:

ProA affinity purified

Applications:

WB:1:500-1:1,000

IHC:1:50-1:100

FC:1:50-1:100

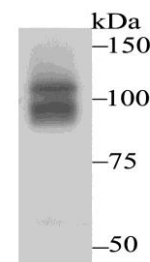
Storage&Stability:

Store at +4 °C after thawing. Aliquot store at -20 °C. Avoid repeated freeze / thaw cycles.

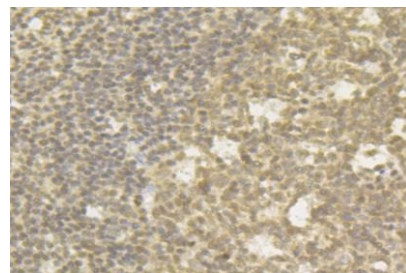
Specificity:

CHD1L polyclonal antibody detects endogenous levels of CHD1L protein.

DATA:



Western blot analysis of CHD1L on HepG2 cell using anti-CHD1L antibody at 1/1,000 dilution.



Immunohistochemical analysis of paraffin-embedded human tonsil tissue using anti-CHD1L antibody. Counter stained with hematoxylin. The section was pre-treated using heat mediated antigen retrieval with sodium citrate buffer (pH6) for 20 mins.

Note:

For research use only, not for use in diagnostic procedure.

Bioworld Technology, Inc.

Add: 1660 South Highway 100, Suite 500 St. Louis Park, MN 55416, USA.

Email: info@bioworld.com

Tel: 6123263284

Fax: 6122933841

Bioworld technology, co. Ltd.

Add: No 9, weidi road Qixia District Nanjing, 210046, P. R. China.

Email: info@biogot.com

Tel: 0086-025-68037686

Fax: 0086-025-68035151