

CXCR5 polyclonal antibody

Catalog: BS90351

Host: Rabbit

Reactivity: Human, Mouse, Rat

BackGround:

Burkitt's lymphoma receptor 1 (Blr1) is a lymphocyte specific chemokine receptor expressed at low levels in secondary lymphoid tissues and in defined structures of the cerebellum. The G-protein coupled receptor has significant homology to other chemokine receptors. Stimulation of Blr1 by its ligand, B-lymphocyte chemo-attractant (BLC) results in an influx of calcium into the cell and the chemotaxis of the cell. Blr1 is required for B-cell migration into splenic and Peyer's patch follicles. BLC expression in Peyer's patches is highest in germinal centers, where B cells undergo somatic mutation and affinity maturation.

Product:

Rabbit IgG, 1mg/ml in PBS with 0.02% sodium azide, 50% glycerol, pH7.2

Molecular Weight:

42 kDa

Swiss-Prot:

P32302(Human) Q04683(Mouse) P34997(Rat)

Purification&Purity:

ProA affinity purified

Applications:

WB:1:500-1:1,000

IHC:1:50-1:200

FC:1:50-1:100

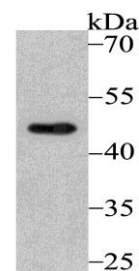
Storage&Stability:

Store at +4 °C after thawing. Aliquot store at -20 °C or -80 °C. Avoid repeated freeze / thaw cycles.

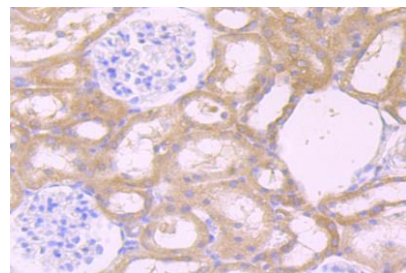
Specificity:

CXCR5 polyclonal antibody detects endogenous levels of CXCR5 protein.

DATA:



Western blot analysis of CXCR5 on Daudi cell using anti-CXCR5 antibody at 1/500 dilution.



Immunohistochemical analysis of paraffin-embedded rat kidney tissue using anti-CXCR5 antibody. Counter stained with hematoxylin.

Note:

For research use only, not for use in diagnostic procedure.

Bioworld Technology, Inc.

Add: 1660 South Highway 100, Suite 500 St. Louis Park, MN 55416, USA.

Email: info@bioworld.com

Tel: 6123263284

Fax: 6122933841

Bioworld technology, co. Ltd.

Add: No 9, weidi road Qixia District Nanjing, 210046, P. R. China.

Email: info@biogot.com

Tel: 0086-025-68037686

Fax: 0086-025-68035151