

Cyclin A1/2 polyclonal antibody

Catalog: BS90352

Host: Rabbit

Reactivity: Human

Background:

The critical role that the family of regulatory proteins known as cyclins play in eukaryotic cell cycle regulation is well established. Cyclin A accumulates prior to cyclin B in the cell cycle, appears to be involved in control of S phase and has been shown to associate with cyclin-dependent kinase-2 (Cdk2). In addition, cyclin A has been implicated in cell transformation and is found in complexes with E1A, transcription factors DRTF1 and E2F, and retinoblastoma protein p110. A second form of cyclin A, named cyclin A1 because of its high sequence homology to *Xenopus* cyclin A1, is most highly expressed in germ cells. It has been proposed that cyclin A1 can associate with Cdk2, p39 and Cdc2 p34. Cyclin A2 is a member of the highly conserved cyclin family. Cyclins regulate CDK kinases and different cyclins exhibit distinct expression and degradation patterns which contribute to the temporal coordination of each mitotic event. Cyclin A2 is expressed in all tissues tested, in contrast to cyclin A1, which is present only in germ cells. The Cyclin A2 protein binds and activates CDC2 or CDK2 kinases, and thus promotes both cell cycle G1/S and G2/M transitions. Cyclin A2 also functions in the transition to DNA replication and synthesis phases of the cell cycle and is quickly destroyed as the cell moves into mitosis.

Product:

Rabbit IgG, 1mg/ml in PBS with 0.02% sodium azide, 50% glycerol, pH7.2

Molecular Weight:

52/49 kDa

Swiss-Prot:

P20248(Human) P78396(Human)

Purification&Purity:

ProA affinity purified

Applications:

WB:1:1,000-1:2,000

IHC:1:50-1:200

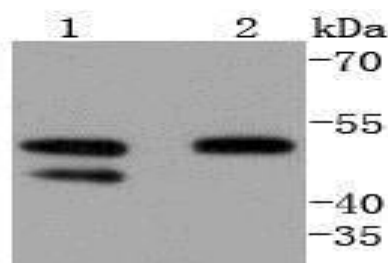
Storage&Stability:

Store at +4 °C after thawing. Aliquot store at -20 °C or -80 °C. Avoid repeated freeze / thaw cycles.

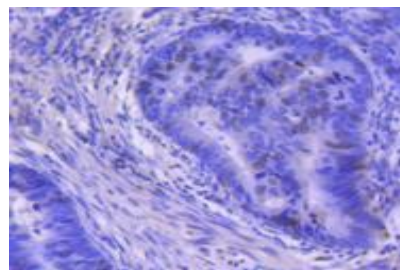
Specificity:

Cyclin A1/2 polyclonal antibody detects endogenous levels of Cyclin A1/2 protein.

DATA:



Western blot analysis of Cyclin A1/A2 on different lysates using anti-Cyclin A1/A2 antibody at 1/1,000 dilution. Positive control: Lane 1: HeLa Lane 2: HepG2



Immunohistochemical analysis of paraffin-embedded human colon cancer tissue using anti-Cyclin A1/A2 antibody. Counter stained with hematoxylin.

Note:

For research use only, not for use in diagnostic procedure.

Bioworld Technology, Inc.

Add: 1660 South Highway 100, Suite 500 St. Louis Park, MN 55416, USA.

Email: info@bioworld.com

Tel: 6123263284

Fax: 6122933841

Bioworld technology, co. Ltd.

Add: No 9, weidi road Qixia District Nanjing, 210046, P. R. China.

Email: info@biogot.com

Tel: 0086-025-68037686

Fax: 0086-025-68035151



PRODUCT DATA SHEET

Bioworld Technology, Inc.

Bioworld Technology, Inc.

Add: 1660 South Highway 100, Suite 500 St. Louis Park,
MN 55416, USA.

Email: info@bioworld.com

Tel: 6123263284

Fax: 6122933841

Bioworld technology, co. Ltd.

Add: No 9, weidi road Qixia District Nanjing, 210046,
P. R. China.

Email: info@biogot.com

Tel: 0086-025-68037686

Fax: 0086-025-68035151