

## Cyclin B1 polyclonal antibody

Catalog: BS90354

Host: Rabbit

Reactivity: Human

### BackGround:

In eukaryotic cells, mitosis is initiated following the activation of a protein kinase known variously as maturation-promoting factor, M-phase specific histone kinase or M-phase kinase. This protein kinase is composed of a catalytic subunit (Cdc2), a regulatory subunit (cyclin B) and a low molecular weight subunit (p13-Suc 1). The Cdc/cyclin enzyme is subject to multiple levels of control, of which the regulation of the catalytic subunit by tyrosine phosphorylation is the best understood. Tyrosine phosphorylation inhibits the Cdc2/cyclin B enzyme; tyrosine dephosphorylation, occurring at the onset of mitosis, directly activates the pre-MPF complex. Evidence has established that B type cyclins not only act on M-phase regulatory subunits of the Cdc2 protein kinase, but also activate the Cdc25A and Cdc25B endogenous tyrosine phosphatase, of which Cdc2 is the physiological substrate. The specificity of this effect is shown by the inability of either cyclin A or cyclin D1 to display any such stimulation of Cdc25A or Cdc25B.

### Product:

Rabbit IgG, 1mg/ml in PBS with 0.02% sodium azide, 50% glycerol, pH7.2

### Molecular Weight:

55 kDa

### Swiss-Prot:

P14635(Human)

### Purification&Purity:

ProA affinity purified

### Applications:

WB:1:1,000-1:5,000

ICC:1:50-1:200

IHC:1:50-1:200

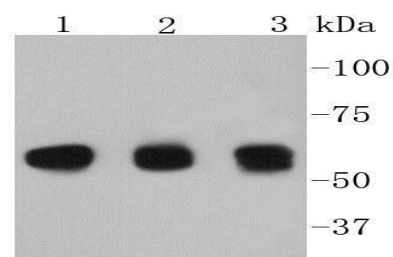
### Storage&Stability:

Store at +4 °C after thawing. Aliquot store at -20 °C or -80 °C. Avoid repeated freeze / thaw cycles.

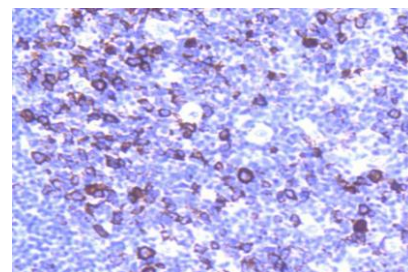
### Specificity:

Cyclin B1 polyclonal antibody detects endogenous levels of Cyclin B1 protein.

### DATA:



Western blot analysis of Cyclin B1 on different lysates using anti-Cyclin B1 antibody at 1/1,000 dilution. Positive control: Lane 1: Hela Lane 2: Daudi Lane 3: K562



Immunohistochemical analysis of paraffin-embedded human tonsil tissue using anti-Cyclin B1 antibody. Counter stained with hematoxylin.

### Note:

For research use only, not for use in diagnostic procedure.

### Bioworld Technology, Inc.

Add: 1660 South Highway 100, Suite 500 St. Louis Park, MN 55416, USA.

Email: [info@bioworld.com](mailto:info@bioworld.com)

Tel: 6123263284

Fax: 6122933841

### Bioworld technology, co. Ltd.

Add: No 9, weidi road Qixia District Nanjing, 210046, P. R. China.

Email: [info@biogot.com](mailto:info@biogot.com)

Tel: 0086-025-68037686

Fax: 0086-025-68035151