

CYP27A1 polyclonal antibody

Catalog: BS90365

Host: Rabbit

Reactivity: Human, Mouse, Rat

BackGround:

P450 enzymes constitute a family of monooxygenase enzymes that are involved in the metabolism of a wide array of endo-genous and xenobiotic compounds. P450 enzymes can be classified, based on their sequence similarities, into distinct subfamilies, which include CYP1A and CYP2A. Other P450 family members include CYP19, also designated aromatase (P450arom), which catalyzes the conversion of C19 steroids to estrogens in various tissues, including placenta, gonads, adipose tissue, skin and brain. CYP19 expression is controlled by hormonally regulated promoters in different tissues and increased aromatase activity is associated with familial gynecomastia. Also, a polymorphic allele of CYP19 (repeat (TTTA)₁₂) is present in a majority of breast cancer patients. P450 cholesterol 7 α -hydroxylase, CYP7A1, is the rate limiting enzyme of bile acid synthesis in the liver, and its expression is mediated by the bile acid receptor FXR. CYP27A1 catalyzes vitamin D3 25-hydroxylation and is localized to the mitochondria in kidney and liver.

Product:

Rabbit IgG, 1mg/ml in PBS with 0.02% sodium azide, 50% glycerol, pH7.2

Molecular Weight:

60 kDa

Swiss-Prot:

Q02318(Human) Q9DBG1(Mouse) P17178(Rat)

Purification&Purity:

ProA affinity purified

Applications:

WB:1:500-1:2,000

ICC:1:50-1:200

IHC:1:50-1:200

FC:1:50-1:100

Storage&Stability:

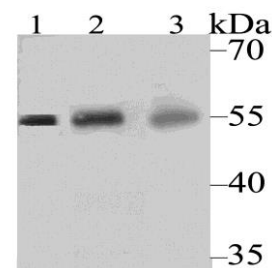
Store at +4 °C after thawing. Aliquot store at -20 °C. Avoid

repeated freeze / thaw cycles.

Specificity:

CYP27A1 polyclonal antibody detects endogenous levels of CYP27A1 protein.

DATA:



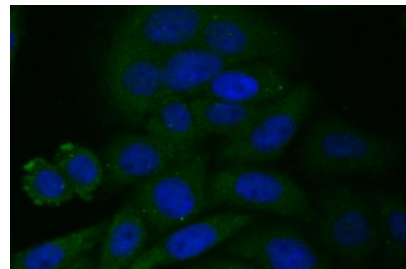
Western blot analysis of CYP27A1 on different tissue lysates using anti-CYP27A1 antibody at 1/500 dilution.

Positive control:

Lane 1: Rat heart

Lane 2: Human liver

Lane 3: Human kidney



ICC staining CYP27A1 in HepG2 cells (green). The nuclear counter stain is DAPI (blue). Cells were fixed in paraformaldehyde, permeabilized with 0.25% Triton X100/PBS.

Note:

For research use only, not for use in diagnostic procedure.

Bioworld Technology, Inc.

Add: 1660 South Highway 100, Suite 500 St. Louis Park, MN 55416, USA.

Email: info@bioworld.com

Tel: 6123263284

Fax: 6122933841

Bioworld technology, co. Ltd.

Add: No 9, weidi road Qixia District Nanjing, 210046, P. R. China.

Email: info@biogot.com

Tel: 0086-025-68037686

Fax: 0086-025-68035151



PRODUCT DATA SHEET

Bioworld Technology, Inc.

Bioworld Technology, Inc.

Add: 1660 South Highway 100, Suite 500 St. Louis Park,
MN 55416, USA.

Email: info@bioworld.com

Tel: 6123263284

Fax: 6122933841

Bioworld technology, co. Ltd.

Add: No 9, weidi road Qixia District Nanjing, 210046,
P. R. China.

Email: info@biogot.com

Tel: 0086-025-68037686

Fax: 0086-025-68035151