

## CYP2D6 polyclonal antibody

Catalog: BS90366

Host: Rabbit

Reactivity: Human

### BackGround:

The P450II family comprises at least five subfamilies, designated A through E by the system of nomenclature recommended by an international committee. The P450IID subfamily comprises at least two genes in the rat, one of which is highly specific for debrisoquine 4-hydroxylase activity. An association of this gene with lung cancer has been found. Enhanced CYP2D6 activity has been related to malignancies of the bladder, liver, pharynx and stomach, and especially to cigarette-smoking-induced lung cancer. The data suggests that enhanced CYP2D6-mediated metabolism of one or more dietary and other environmental agents, to form a reactive intermediate, plays a role in cancer initiation and/or promotion in various tissues. CYP2D6 polymorphism, which is responsible for the variation in metabolism of debrisoquine 4-hydroxylase, is important in the metabolism of more than 30 drugs and environmental chemicals, including as much as 20% of all commonly prescribed drugs. The gene which encodes CYP2D6 maps to human chromosome 22q13.1.

### Product:

Rabbit IgG, 1mg/ml in PBS with 0.02% sodium azide, 50% glycerol, pH7.2

### Molecular Weight:

56 kDa

### Swiss-Prot:

P10635(Human)

### Purification&Purity:

ProA affinity purified

### Applications:

WB:1:500-1:2,000

ICC:1:50-1:200

IHC:1:50-1:200

FC:1:50-1:100

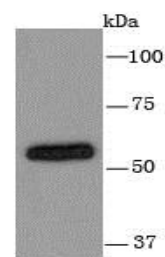
### Storage&Stability:

Store at +4 °C after thawing. Aliquot store at -20 °C or -80 °C. Avoid repeated freeze / thaw cycles.

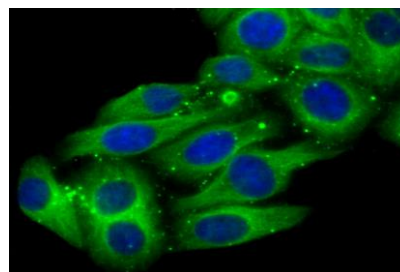
### Specificity:

CYP2D6 polyclonal antibody detects endogenous levels of CYP2D6 protein.

### DATA:



Western blot analysis of Cytochrome P450 2D6 on HepG2 cell using anti-Cytochrome P450 2D6 antibody at 1/1,000 dilution.



ICC staining Cytochrome P450 2D6 in HepG2 cells (green). The nuclear counter stain is DAPI (blue). Cells were fixed in paraformaldehyde, permeabilised with 0.25% Triton X100/PBS.

### Note:

For research use only, not for use in diagnostic procedure.

### Bioworld Technology, Inc.

Add: 1660 South Highway 100, Suite 500 St. Louis Park, MN 55416, USA.

Email: [info@bioworld.com](mailto:info@bioworld.com)

Tel: 6123263284

Fax: 6122933841

### Bioworld technology, co. Ltd.

Add: No 9, weidi road Qixia District Nanjing, 210046, P. R. China.

Email: [info@biogot.com](mailto:info@biogot.com)

Tel: 0086-025-68037686

Fax: 0086-025-68035151