

Cytokeratin 6 polyclonal antibody

Catalog: BS90385

Host: Rabbit

Reactivity: Human

BackGround:

Cytokeratins comprise a diverse group of intermediate filament proteins (IFPs) that are expressed as pairs in both keratinized and non-keratinized epithelial tissue, where they constitute up to 85% of mature keratinocytes in the vertebrate epidermis. Cytokeratins play a critical role in differentiation and tissue specialization and function to maintain the overall structural integrity of epithelial cells. The alpha-helical coiled-coil dimers associate laterally end-to-end to form 10 nm diameter filaments. Cytokeratins, which are useful markers of tissue differentiation, also aid in the characterization of malignant tumors. IL-1 and TNF α induce transcription of cytokeratin 6 in epidermal keratinocytes via the C/EBP β transcription factor. In humans, multiple isoforms of cytokeratin 6 (6A-6F), encoded by several highly homologous genes, have distinct tissue expression patterns, and cytokeratin 6A is the dominant form in epithelial tissue. The gene encoding human cytokeratin 6A maps to chromosome 12q13, and mutations in this gene are linked to several inheritable hair and skin pathologies.

Product:

Rabbit IgG, 1mg/ml in PBS with 0.02% sodium azide, 50% glycerol, pH7.2

Molecular Weight:

60 kDa

Swiss-Prot:

P02538(Human) P04259(Human) P48668(Human)

Purification&Purity:

ProA affinity purified

Applications:

WB:1:1,000-1:2,000

ICC:1:100-1:500

IHC:1:50-1:200

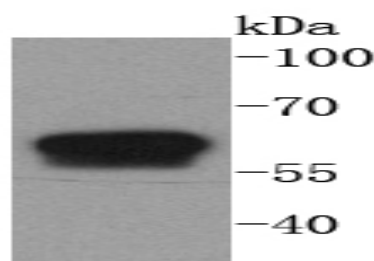
Storage&Stability:

Store at +4 °C after thawing. Aliquot store at -20 °C or -80 °C. Avoid repeated freeze / thaw cycles.

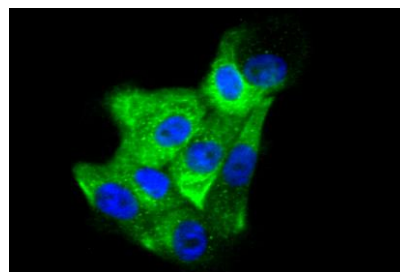
Specificity:

Cytokeratin 6 polyclonal antibody detects endogenous levels of Cytokeratin 6 protein.

DATA:



Western blot analysis of Cytokeratin 6 on human skin lysates using anti-Cytokeratin 6 antibody at 1/1,000 dilution.



ICC staining Cytokeratin 6 in A431 cells (green). The nuclear counter stain is DAPI (blue). Cells were fixed in paraformaldehyde, permeabilised with 0.25% Triton X100/PBS.

Note:

For research use only, not for use in diagnostic procedure.

Bioworld Technology, Inc.

Add: 1660 South Highway 100, Suite 500 St. Louis Park, MN 55416, USA.

Email: info@bioworld.com

Tel: 6123263284

Fax: 6122933841

Bioworld technology, co. Ltd.

Add: No 9, weidi road Qixia District Nanjing, 210046, P. R. China.

Email: info@biogot.com

Tel: 0086-025-68037686

Fax: 0086-025-68035151