

DEK polyclonal antibody

Catalog: BS90405

Host: Rabbit

Reactivity: Human

BackGround:

The mammalian nuclear phosphoprotein DEK is implicated in multiple cellular processes, including transcriptional regulation, mRNA processing, and chromatin remodeling, and is associated with a number of clinical autoimmune and neoplastic conditions. DEK, an abundant chromatin-associated protein, changes the topology of DNA in chromatin in vitro. Although first identified in a fusion with the CAN/Nup214 nucleoporin protein in a specific subtype of acute myelogenous leukemia, DEK is also an autoantigen in patients with Pauciarticular onset juvenile rheumatoid arthritis. Furthermore, the last 65 amino acids of DEK can partially reverse the mutation-prone phenotype of cells from patients with ataxia-telangiectasia. The human DEK gene maps to chromosome 6p22.3.

Product:

Rabbit IgG, 1mg/ml in PBS with 0.02% sodium azide, 50% glycerol, pH7.2

Molecular Weight:

43 kDa

Swiss-Prot:

P35659(Human)

Purification&Purity:

ProA affinity purified

Applications:

WB:1:500-1:1,000

IP:1:50-1:100

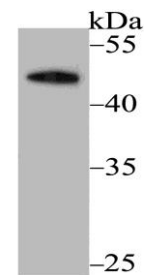
Storage&Stability:

Store at +4 °C after thawing. Aliquot store at -20 °C. Avoid repeated freeze / thaw cycles.

Specificity:

DEK polyclonal antibody detects endogenous levels of DEK protein.

DATA:



Western blot analysis of DEK on A431 cell lysate using anti-DEK antibody at 1/500 dilution.

Note:

For research use only, not for use in diagnostic procedure.

Bioworld Technology, Inc.

Add: 1660 South Highway 100, Suite 500 St. Louis Park, MN 55416, USA.

Email: info@bioworld.com

Tel: 6123263284

Fax: 6122933841

Bioworld technology, co. Ltd.

Add: No 9, weidi road Qixia District Nanjing, 210046, P. R. China.

Email: info@biogot.com

Tel: 0086-025-68037686

Fax: 0086-025-68035151