

## DIAPH3 polyclonal antibody

Catalog: BS90410

Host: Rabbit

Reactivity: Human, Mouse

### BackGround:

DIAPH3 (diaphanous homolog 3), also known as DIAP3, DRF3 or mDia2 of mouse origin, is a 1,193 amino acid member of the formin homology protein family and is required for the correct function of various cellular processes. DIAPH3 binds to both Profilin, a protein involved in cell maintenance, and to the GTP-bound form of Rho (Rho-GTP). Binding to both of these proteins allows DIAPH3 to recruit Profilin to the membrane, in a Rho-dependent manner. At the membrane, DIAPH3 promotes Actin polymerization and is required for stress fiber formation, cytokinesis and transcriptional activation of the serum response factor (SRF). DIAPH3 also regulates Actin dynamics by coupling Src tyrosine kinase (c-Src) and Rho during Actin signaling events. DIAPH3 contains one diaph-anous autoregulatory domain (DAD) and one Rho GTPase-binding domain (GBD). When DAD and GBD are intramolecularly bound, the GBD is occupied and DIAPH3 is inactive. Interruption of the DAD-GBD bond allows the GBD to bind to Rho-GTP, thus activating DIAPH3. Seven isoforms of DIAPH3 exist due to alternative splicing events.

### Product:

Rabbit IgG, 1mg/ml in PBS with 0.02% sodium azide, 50% glycerol, pH7.2

### Molecular Weight:

137/80 kDa

### Swiss-Prot:

Q9NSV4(Human)

### Purification&Purity:

Peptide affinity purified.

### Applications:

WB:1:500

ICC:1:50-1:200

IHC:1:50-1:200

FC:1:50-1:100

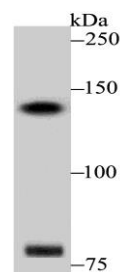
### Storage&Stability:

Store at +4 °C after thawing. Aliquot store at -20 °C. Avoid repeated freeze / thaw cycles.

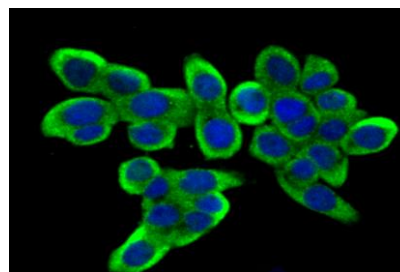
### Specificity:

DIAPH3 polyclonal antibody detects endogenous levels of DIAPH3 protein.

### DATA:



Western blot analysis of DIAPH3 on SiHa cell lysate using anti-DIAPH3 antibody at 1/500 dilution.



ICC staining DIAPH3 in LOVO cells (green). The nuclear counter stain is DAPI (blue). Cells were fixed in paraformaldehyde, permeabilised with 0.25% Triton X100/PBS.

### Note:

For research use only, not for use in diagnostic procedure.

### Bioworld Technology, Inc.

Add: 1660 South Highway 100, Suite 500 St. Louis Park, MN 55416, USA.

Email: [info@bioworld.com](mailto:info@bioworld.com)

Tel: 6123263284

Fax: 6122933841

### Bioworld technology, co. Ltd.

Add: No 9, weidi road Qixia District Nanjing, 210046, P. R. China.

Email: [info@biogot.com](mailto:info@biogot.com)

Tel: 0086-025-68037686

Fax: 0086-025-68035151