

DLL4 polyclonal antibody

Catalog: BS90415

Host: Rabbit

Reactivity: Human, Rat

BackGround:

The LIN-12/Notch family of transmembrane receptors is believed to play a central role in development by regulating cell fate decisions. Notch proteins have been found to be overexpressed or rearranged in human tumors. Ligands for Notch include Jagged, Jagged-2 and Delta. While blocking the differentiation of progenitor cells into the B-cell lineage, Delta promotes the emergence of a population of cells with T cell/NK-cell characteristics. The protein is a membrane protein expressed in heart, pancreas, brain and muscle during gastrulation and early organogenesis and in adult heart and lung. Delta-4 is a membrane protein that activates Notch-1 and Notch-4. It is expressed in a wide range of adult and fetal tissues, especially in vascular endothelium.

Product:

Rabbit IgG, 1mg/ml in PBS with 0.02% sodium azide, 50% glycerol, pH7.2

Molecular Weight:

74 kDa

Swiss-Prot:

Q9NR61(Human) D3ZHH1(Rat)

Purification&Purity:

Peptide affinity purified.

Applications:

WB:1:500-1:1,000

ICC:1:50-1:200

IHC:1:50-1:200

FC:1:50-1:100

Storage&Stability:

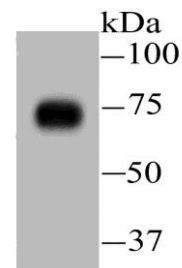
Store at +4 °C after thawing. Aliquot store at -20 °C or

-80 °C. Avoid repeated freeze / thaw cycles.

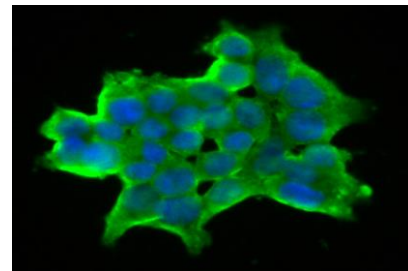
Specificity:

DLL4 polyclonal antibody detects endogenous levels of DLL4 protein.

DATA:



Western blot analysis of DLL4 on human lung tissue lysate using anti-DLL4 antibody at 1/500 dilution.



ICC staining DLL4 in 293T cells (green). The nuclear counter stain is DAPI (blue). Cells were fixed in paraformaldehyde, permeabilised with 0.25% Triton X100/PBS.

Note:

For research use only, not for use in diagnostic procedure.

Bioworld Technology, Inc.

Add: 1660 South Highway 100, Suite 500 St. Louis Park, MN 55416, USA.

Email: info@bioworld.com

Tel: 6123263284

Fax: 6122933841

Bioworld technology, co. Ltd.

Add: No 9, weidi road Qixia District Nanjing, 210046, P. R. China.

Email: info@biogot.com

Tel: 0086-025-68037686

Fax: 0086-025-68035151