

## DNA Ligase I polyclonal antibody

Catalog: BS90416

Host: Rabbit

Reactivity: Human, Rat

### BackGround:

This gene encodes a member of the ATP-dependent DNA ligase protein family. The encoded protein functions in DNA replication, recombination, and the base excision repair process. Mutations in this gene that lead to DNA ligase I deficiency result in immunodeficiency and increased sensitivity to DNA-damaging agents. Disruption of this gene may also be associated with a variety of cancers. Alternative splicing results in multiple transcript variants.

### Product:

Rabbit IgG, 1mg/ml in PBS with 0.02% sodium azide, 50% glycerol, pH7.2

### Molecular Weight:

Predicted band size 102 kDa

### Swiss-Prot:

P18858(Human) 37227(Rat)

### Purification&Purity:

ProA affinity purified

### Applications:

WB:1:500

IHC:1:50-1:200

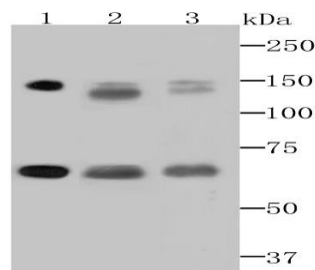
### Storage&Stability:

Store at +4 °C after thawing. Aliquot store at -20 °C or -80 °C. Avoid repeated freeze / thaw cycles.

### Specificity:

DNA Ligase I polyclonal antibody detects endogenous levels of DNA Ligase I protein.

### DATA:



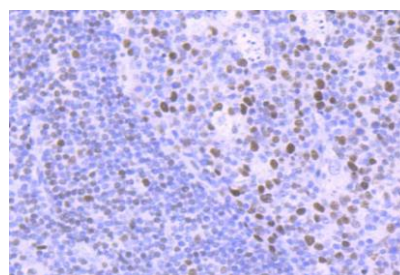
Western blot analysis of DNA Ligase I on different cell lysates using anti-DNA Ligase I antibody at 1/500 dilution.

Positive control:

Lane 1: Daudi

Lane 2: A431

Lane 3: MCF-7



Immunohistochemical analysis of paraffin-embedded human tonsil tissue using anti-DNA Ligase I antibody. Counter stained with hematoxylin.

### Note:

For research use only, not for use in diagnostic procedure.

### Bioworld Technology, Inc.

Add: 1660 South Highway 100, Suite 500 St. Louis Park, MN 55416, USA.

Email: [info@bioworld.com](mailto:info@bioworld.com)

Tel: 6123263284

Fax: 6122933841

### Bioworld technology, co. Ltd.

Add: No 9, weidi road Qixia District Nanjing, 210046, P. R. China.

Email: [info@biogot.com](mailto:info@biogot.com)

Tel: 0086-025-68037686

Fax: 0086-025-68035151