

## DNA Polymerase $\beta$ polyclonal antibody

Catalog: BS90419

Host: Rabbit

Reactivity: Human, Mouse, Rat, Zebrafish

### BackGround:

Repair polymerase that plays a key role in base-excision repair. Has 5'-deoxyribose-5-phosphate lyase (dRP lyase) activity that removes the 5' sugar phosphate and also acts as a DNA polymerase that adds one nucleotide to the 3' end of the arising single-nucleotide gap. Conducts 'gap-filling' DNA synthesis in a stepwise distributive fashion rather than in a processive fashion as for other DNA polymerases.

### Product:

Rabbit IgG, 1mg/ml in PBS with 0.02% sodium azide, 50% glycerol, pH7.2

### Molecular Weight:

38 kDa

### Swiss-Prot:

P06746(Human) Q8K409(Mouse) P06766(Rat)

### Purification&Purity:

ProA affinity purified

### Applications:

WB:1:500

IHC:1:50-1:200

ICC:1:20-1:50

IP:1:10-1:20

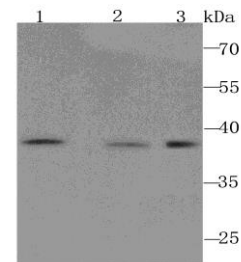
### Storage&Stability:

Store at +4 °C after thawing. Aliquot store at -20 °C or -80 °C. Avoid repeated freeze / thaw cycles.

### Specificity:

DNA Polymerase  $\beta$  polyclonal antibody detects endogenous levels of DNA Polymerase  $\beta$  protein.

### DATA:



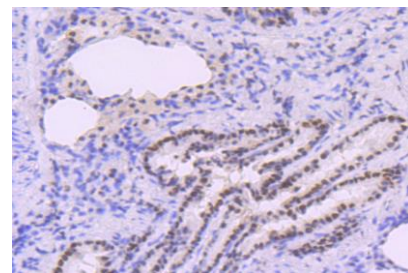
Western blot analysis of DNA Polymerase beta on different cell lysate using anti-DNA Polymerase beta antibody at 1/1,000 dilution.

Positive control:

Lane1: PC-12

Lane2: NIH-3T3

Lane3: A431



Immunohistochemical analysis of paraffin-embedded rat lung tissue using anti-DNA Polymerase beta antibody. Counter stained with hematoxylin.

### Note:

For research use only, not for use in diagnostic procedure.

### Bioworld Technology, Inc.

Add: 1660 South Highway 100, Suite 500 St. Louis Park, MN 55416, USA.

Email: [info@bioworld.com](mailto:info@bioworld.com)

Tel: 6123263284

Fax: 6122933841

### Bioworld technology, co. Ltd.

Add: No 9, weidi road Qixia District Nanjing, 210046, P. R. China.

Email: [info@biogot.com](mailto:info@biogot.com)

Tel: 0086-025-68037686

Fax: 0086-025-68035151