

Doublecortin polyclonal antibody

Catalog: BS90426

Host: Rabbit

Reactivity: Human, Mouse, Rat

BackGround:

Lissencephaly (smooth brain) is an abnormality of brain development characterized by incomplete neuronal migration and a smooth cerebral surface, resulting in severe mental retardation. Genetic analysis identified two proteins that are mutated in some cases of lissencephaly, designated lissencephaly-1 protein (LIS1) and doublecortin. LIS1 shows sequence homology to β -subunits of heterotrimeric G proteins. Doublecortin contains a consensus Abl phosphorylation site, and it has some sequence homology to a predicted kinase protein. Both proteins are highly expressed in developing brain, suggesting that they may be involved in a signal transduction pathway that is crucial to brain development.

Product:

Rabbit IgG, 1mg/ml in PBS with 0.02% sodium azide, 50% glycerol, pH7.2

Molecular Weight:

41 kDa

Swiss-Prot:

O43602(Human) O88809(Mouse) Q9ESI7(Rat)

Purification&Purity:

ProA affinity purified

Applications:

WB:1:1,000-1:5,000

FC:1:50-1:100

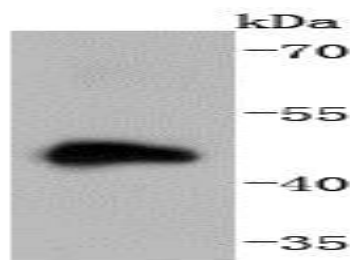
Storage&Stability:

Store at +4 °C after thawing. Aliquot store at -20 °C or -80 °C. Avoid repeated freeze / thaw cycles.

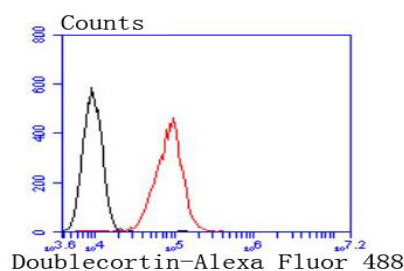
Specificity:

Doublecortin polyclonal antibody detects endogenous levels of Doublecortin protein.

DATA:



Western blot analysis of Doublecortin on human brain lysates using anti-Doublecortin antibody at 1/1,000 dilution.



Flow cytometric analysis of HepG2 cells with Doublecortin antibody at 1/50 dilution (red) compared with an unlabelled control (cells without incubation with primary antibody; black). Alexa Fluor 488-conjugated goat anti rabbit IgG was used as the secondary antibody

Note:

For research use only, not for use in diagnostic procedure.

Bioworld Technology, Inc.

Add: 1660 South Highway 100, Suite 500 St. Louis Park, MN 55416, USA.

Email: info@bioworld.com

Tel: 6123263284

Fax: 6122933841

Bioworld technology, co. Ltd.

Add: No 9, weidi road Qixia District Nanjing, 210046, P. R. China.

Email: info@biogot.com

Tel: 0086-025-68037686

Fax: 0086-025-68035151