

DRD1 polyclonal antibody

Catalog: BS90428

Host: Rabbit

Reactivity: Human, Mouse, Rat

Background:

The members of the G protein coupled receptor family are distinguished by their slow transmitting response to ligand binding. These transmembrane proteins include the adrenergic, serotonin and dopamine receptors. The effect of the signaling molecule can be excitatory or inhibitory depending on the type of receptor to which it binds. β -adrenergic receptor binds to adrenaline activates adenylyl cyclase, while α 2-adrenergic receptor binds to adrenaline inhibits adenylyl cyclase. The dopamine receptors are divided into two classes, D1 and D2, which differ in their functional characteristics in that D1 receptors stimulate adenylyl cyclase while D2 receptors inhibit adenylyl cyclase activity. Five different subtypes of dopamine receptor have been described to date. D1DR and D5DR belong to the D1 subclass, while D2DR, D3DR and D4DR belong to the D2 subclass.

Product:

Rabbit IgG, 1mg/ml in PBS with 0.02% sodium azide, 50% glycerol, pH7.2

Molecular Weight:

75 kDa

Swiss-Prot:

P21728(Human) Q61616(Mouse) P18901(Rat)

Purification&Purity:

ProA affinity purified

Applications:

WB:1:500-1:1,000

ICC:1:100-1:500

IHC:1:50-1:200

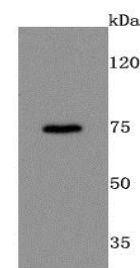
Storage&Stability:

Store at +4 °C after thawing. Aliquot store at -20 °C or -80 °C. Avoid repeated freeze / thaw cycles.

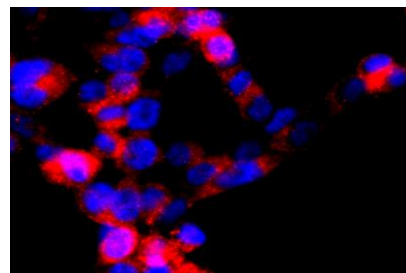
Specificity:

DRD1 polyclonal antibody detects endogenous levels of DRD1 protein.

DATA:



Western blot analysis of DRD1 on mouse kidney cells lysates using anti-DRD1 antibody at 1/500 dilution.



ICC staining DRD1 in 293T cells (red). The nuclear counter stain is DAPI (blue). Cells were fixed in paraformaldehyde, permeabilised with 0.25% Triton X100/PBS.

Note:

For research use only, not for use in diagnostic procedure.

Bioworld Technology, Inc.

Add: 1660 South Highway 100, Suite 500 St. Louis Park, MN 55416, USA.

Email: info@bioworld.com

Tel: 6123263284

Fax: 6122933841

Bioworld technology, co. Ltd.

Add: No 9, weidi road Qixia District Nanjing, 210046, P. R. China.

Email: info@biogot.com

Tel: 0086-025-68037686

Fax: 0086-025-68035151