

Dynamin 1 polyclonal antibody

Catalog: BS90432

Host: Rabbit

Reactivity: Human, Mouse, Rat

Background:

Members of the Dynamin family, including Dynamin I and Dynamin II, are GTPase, microtubule-associated proteins which are involved in endocytosis, synaptic transmission and neurogenesis. Dynamin I is localized to the central nervous system, while Dynamin II exhibits ubiquitous distribution with highest expression found in testis. Both dynamin proteins contain SH3 and proline-rich domains that mediate interactions between the dynamins and effectors of their GTPase activity). The interactions with these effectors, which include microtubules, acidic phospholipids and SH3 domain-containing proteins, are required for rapid endocytosis. Dynamin I appears to be recruited to clathrin coated pits by SH3 domain interaction with amphiphysin, a protein highly expressed in brain.

Product:

Rabbit IgG, 1mg/ml in PBS with 0.02% sodium azide, 50% glycerol, pH7.2

Molecular Weight:

97 kDa

Swiss-Prot:

Q05193(Human) P39053(Mouse) P21575(Rat)

Purification&Purity:

Protein affinity purified.

Applications:

WB:1:500-1:1,000

IHC:1:50-1:200

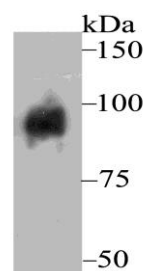
Storage&Stability:

Store at +4 °C after thawing. Aliquot store at -20 °C. Avoid repeated freeze / thaw cycles.

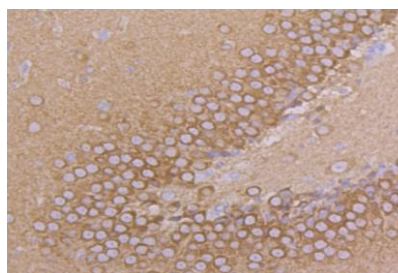
Specificity:

Dynamin 1 polyclonal antibody detects endogenous levels of Dynamin 1 protein.

DATA:



Western blot analysis of Dynamin 1 on mouse brain tissue lysate using anti-Dynamin 1 antibody at 1/500 dilution.



Immunohistochemical analysis of paraffin-embedded rat brain tissue using anti-Dynamin 1 antibody. Counter stained with hematoxylin.

Note:

For research use only, not for use in diagnostic procedure.

Bioworld Technology, Inc.

Add: 1660 South Highway 100, Suite 500 St. Louis Park, MN 55416, USA.

Email: info@bioworld.com

Tel: 6123263284

Fax: 6122933841

Bioworld technology, co. Ltd.

Add: No 9, weidi road Qixia District Nanjing, 210046, P. R. China.

Email: info@biogot.com

Tel: 0086-025-68037686

Fax: 0086-025-68035151