

EGF polyclonal antibody

Catalog: BS90448

Host: Rabbit

Reactivity: Human

BackGround:

Epidermal growth factor (EGF) is an acid- and heat-stable 53 amino acid protein originally found in rodents and humans. It has been shown to be a potent mitogen for a variety of cell types both in vivo and in vitro. EGF binds to the EGF receptor on the surface of cells and mediates intrinsic phosphorylation of the receptor on tyrosine residues. It has been detected in nearly all body fluids, such as urine (urogastrone), saliva, milk and platelet-rich plasma. EGF, TGF α and vaccinia virus growth factor exhibit 30-40% amino acid homology. Several additional members of the EGF/TGF family have been described; these include Cripto, Amphiregulin and the heparin-binding EGF-like growth factor. Amphiregulin and the heparin-binding EGF-like growth factor both bind to the EGF receptor.

Product:

Rabbit IgG, 1mg/ml in PBS with 0.02% sodium azide, 50% glycerol, pH7.2

Molecular Weight:

130/10 kDa

Swiss-Prot:

P01133(Human)

Purification&Purity:

ProA affinity purified

Applications:

WB:1:500-1:1,000

IHC:1:50-1:100

IP:1:10-1:50

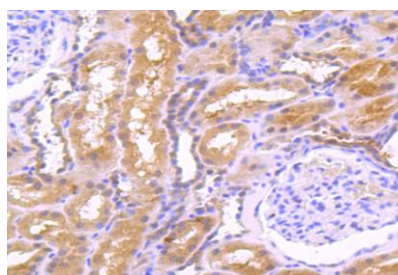
Storage&Stability:

Store at +4 °C after thawing. Aliquot store at -20 °C or -80 °C. Avoid repeated freeze / thaw cycles.

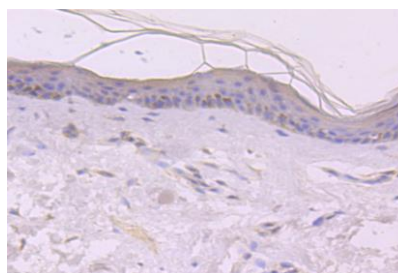
Specificity:

EGF polyclonal antibody detects endogenous levels of EGF protein.

DATA:



Immunohistochemical analysis of paraffin-embedded human kidney tissue using anti-EGF antibody. Counter stained with hematoxylin.



Immunohistochemical analysis of paraffin-embedded human skin tissue using anti-EGF antibody. Counter stained with hematoxylin.

Note:

For research use only, not for use in diagnostic procedure.

Bioworld Technology, Inc.

Add: 1660 South Highway 100, Suite 500 St. Louis Park, MN 55416, USA.

Email: info@bioworld.com

Tel: 6123263284

Fax: 6122933841

Bioworld technology, co. Ltd.

Add: No 9, weidi road Qixia District Nanjing, 210046, P. R. China.

Email: info@biogot.com

Tel: 0086-025-68037686

Fax: 0086-025-68035151