

## EGR2 polyclonal antibody

Catalog: BS90452

Host: Rabbit

Reactivity: Human, Mouse, Rat

### BackGround:

The protein encoded by this gene is a transcription factor with three tandem C2H2-type zinc fingers. Binds to two specific DNA sites located in the promoter region of HOXA4. E3 SUMO-protein ligase helping SUMO1 conjugation to its coregulators NAB1 and NAB2, whose sumoylation down-regulates EGR2 own transcriptional activity. Defects in this gene are associated with Charcot-Marie-Tooth disease type 1D (CMT1D), Charcot-Marie-Tooth disease type 4E (CMT4E), and with Dejerine-Sottas syndrome (DSS). Multiple transcript variants encoding two different isoforms have been found for this gene.

### Product:

Rabbit IgG, 1mg/ml in PBS with 0.02% sodium azide, 50% glycerol, pH7.2

### Molecular Weight:

50 kDa

### Swiss-Prot:

P11161(Human)

### Purification&Purity:

ProA affinity purified

### Applications:

WB:1:500-1:1,000

FC:1:50-1:100

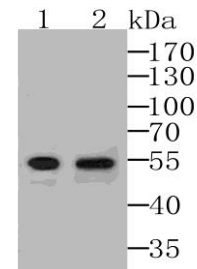
### Storage&Stability:

Store at +4 °C after thawing. Aliquot store at -20 °C. Avoid repeated freeze / thaw cycles.

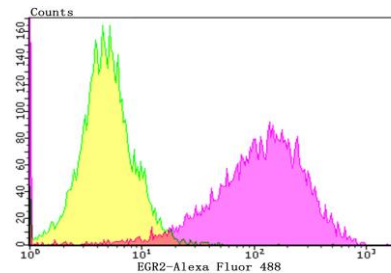
### Specificity:

EGR2 polyclonal antibody detects endogenous levels of EGR2 protein.

### DATA:



Western blot analysis of EGR2 on MCF-7 and SH-SY-5Y cell lysates using anti-EGR2 at 1/500 dilution.



Flow cytometric analysis of SH-SY-5Y cells with EGR2 antibody at 1/50 dilution (Fuchsia) compared with an unlabelled control (cells without incubation with primary antibody; Yellow). Alexa Fluor 488-conjugated goat anti-rabbit IgG was used as the secondary antibody.

### Note:

For research use only, not for use in diagnostic procedure.

### Bioworld Technology, Inc.

Add: 1660 South Highway 100, Suite 500 St. Louis Park, MN 55416, USA.

Email: [info@bioworld.com](mailto:info@bioworld.com)

Tel: 6123263284

Fax: 6122933841

### Bioworld technology, co. Ltd.

Add: No 9, weidi road Qixia District Nanjing, 210046, P. R. China.

Email: [info@biogot.com](mailto:info@biogot.com)

Tel: 0086-025-68037686

Fax: 0086-025-68035151