

EMC10 polyclonal antibody

Catalog: BS90460

Host: Rabbit

Reactivity: Human, Mouse

BackGround:

Belongs to the EMC10 family. Present in serum (at protein level). Expressed in the pituitary gland; very low levels in other brain regions.

Product:

Rabbit IgG, 1mg/ml in PBS with 0.02% sodium azide, 50% glycerol, pH7.2

Molecular Weight:

27 kDa

Swiss-Prot:

Q5UCC4(Human) Q3TAS6(Mouse)

Purification&Purity:

Protein affinity purified

Applications:

WB:1:500-1:1,000

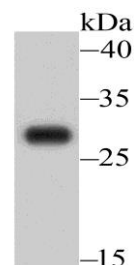
IHC:1:50-1:200

Storage&Stability:

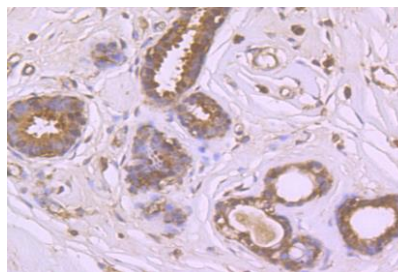
Store at +4 °C after thawing. Aliquot store at -20 °C or -80 °C. Avoid repeated freeze / thaw cycles.

Specificity:

EMC10 polyclonal antibody detects endogenous levels of EMC10 protein.

DATA:

Western blot analysis of EMC10 on A549 cell lysate using anti-EMC10 antibody at 1/500 dilution.



Immunohistochemical analysis of paraffin-embedded human breast tissue using anti-EMC10 antibody. Counter stained with hematoxylin.

Note:

For research use only, not for use in diagnostic procedure.

Bioworld Technology, Inc.

Add: 1660 South Highway 100, Suite 500 St. Louis Park, MN 55416, USA.

Email: info@bioworld.com

Tel: 6123263284

Fax: 6122933841

Bioworld technology, co. Ltd.

Add: No 9, weidi road Qixia District Nanjing, 210046, P. R. China.

Email: info@biogot.com

Tel: 0086-025-68037686

Fax: 0086-025-68035151