

Emi1 polyclonal antibody

Catalog: BS90461

Host: Rabbit

Reactivity: Human, Mouse, Rat

BackGround:

Emi1 (for early mitotic inhibitor) regulates mitosis by inhibiting the anaphase promoting complex/cyclosome (APC). Emi1 is a conserved F box protein containing a zinc binding region essential for APC inhibition. The Emi1 protein functions to promote cyclin A accumulation and S phase entry in somatic cells by inhibiting the APC complex. At the G1-S transition, Emi1 is transcriptionally induced by the E2F transcription factor. Emi1 overexpression accelerates S phase entry and can override a G1 block caused by overexpression of Cdh1 or the E2F-inhibitor p105 retinoblastoma protein (pRb). Depleting cells of Emi1 through RNA interference prevents accumulation of cyclin A and inhibits S phase entry. Emi1 is required to arrest unfertilized eggs at metaphase of meiosis II and may be the long-sought mediator of CSF activity. Human Emi1 is similar to *Xenopus laevis* Emi1, which inhibits the APC (Cdc20) ubiquitination complex to allow accumulation of cyclin B.

Product:

Rabbit IgG, 1mg/ml in PBS with 0.02% sodium azide, 50% glycerol, pH7.2

Molecular Weight:

50 kDa

Swiss-Prot:

Q9UKT4(Human) Q7TSG3(Mouse)

Purification&Purity:

ProA affinity purified

Applications:

ICC:1:50-1:200

IHC:1:50-1:200

WB:1:500

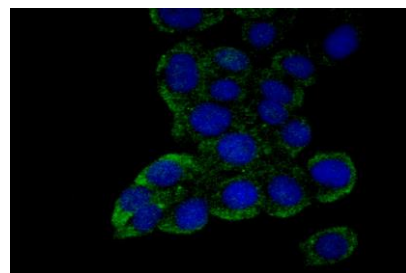
Storage&Stability:

Store at +4 °C after thawing. Aliquot store at -20 °C. Avoid repeated freeze / thaw cycles.

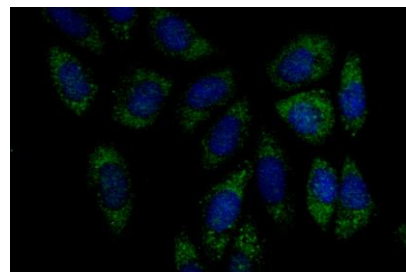
Specificity:

Emi1 polyclonal antibody detects endogenous levels of Emi1 protein.

DATA:



ICC staining Emi1 in LOVO cells (green). The nuclear counter stain is DAPI (blue). Cells were fixed in paraformaldehyde, permeabilised with 0.25% Triton X100/PBS.



ICC staining Emi1 in Siha cells (green). The nuclear counter stain is DAPI (blue). Cells were fixed in paraformaldehyde, permeabilised with 0.25% Triton X100/PBS.

Note:

For research use only, not for use in diagnostic procedure.

Bioworld Technology, Inc.

Add: 1660 South Highway 100, Suite 500 St. Louis Park, MN 55416, USA.

Email: info@bioworld.com

Tel: 6123263284

Fax: 6122933841

Bioworld technology, co. Ltd.

Add: No 9, weidi road Qixia District Nanjing, 210046, P. R. China.

Email: info@biogot.com

Tel: 0086-025-68037686

Fax: 0086-025-68035151