

Enterotoxin A polyclonal antibody

Catalog: BS90464

Host: Rabbit

Reactivity: Staphylococcus aureus

BackGround:

Staphylococcal enterotoxins cause the intoxication staphylococcal food poisoning syndrome. The illness is characterized by high fever, hypotension, diarrhea, shock, and in some cases death.

Product:

Rabbit IgG, 1mg/ml in PBS with 0.02% sodium azide, 50% glycerol, pH7.2

Molecular Weight:

25 kDa

Swiss-Prot:

P0A0L2(Staphylococcus aureus)

Purification&Purity:

Protein affinity purified.

Applications:

WB:1:500-1:1,000

ELISA:1:5,000-1:10,000

Storage&Stability:

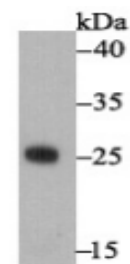
Store at +4 °C after thawing. Aliquot store at -20 °C. Avoid

repeated freeze / thaw cycles.

Specificity:

Enterotoxin A polyclonal antibody detects endogenous levels of Enterotoxin A protein.

DATA:



Western blot analysis of Enterotoxin A on recombinant protein lysate using anti-Enterotoxin A antibody at 1/1,000 dilution.

Note:

For research use only, not for use in diagnostic procedure.

Bioworld Technology, Inc.

Add: 1660 South Highway 100, Suite 500 St. Louis Park, MN 55416, USA.

Email: info@bioworld.com

Tel: 6123263284

Fax: 6122933841

Bioworld technology, co. Ltd.

Add: No 9, weidi road Qixia District Nanjing, 210046, P. R. China.

Email: info@biogot.com

Tel: 0086-025-68037686

Fax: 0086-025-68035151