

Epac1 polyclonal antibody

Catalog: BS90465

Host: Rabbit

Reactivity: Human, Mouse

BackGround:

3',5' cyclic adenosine monophosphate (cAMP)-regulated guanine nucleotide exchange factors Epac (Epac1, cAMP-GEFI) and Epac2 (cAMP-GEFII) activate the Ras family GTPases Rap 1 and Rap 2 by promoting GTP binding in a cAMP-dependent manner. Eukaryotic cAMP is a second messenger that induces physiological responses such as gene expression, growth, differentiation, secretion and neurotransmission. The human Epac gene maps to chromosome 12q13.11 with transcript being abundant in the kidney and heart. In situ hybridization indicates expression of Epac in adult rat brain and selective expression in neonatal brain, including septum and thalamus.

Product:

Rabbit IgG, 1mg/ml in PBS with 0.02% sodium azide, 50% glycerol, pH7.2

Molecular Weight:

Swiss-Prot:

O95398(Human) Q8VCC8(Mouse)

Purification&Purity:

ProA affinity purified

Applications:

WB:1:500-1:1,000

IHC:1:50-1:200

IP:1:10-1:50

ICC/IF:1:10-1:50

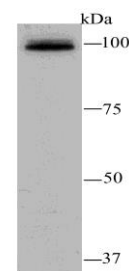
Storage&Stability:

Store at +4 °C after thawing. Aliquot store at -20 °C or -80 °C. Avoid repeated freeze / thaw cycles.

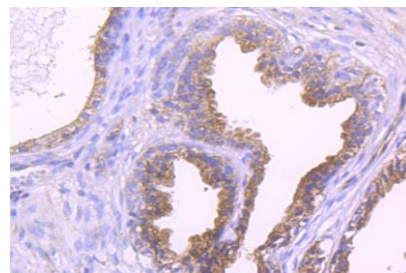
Specificity:

Epac1 polyclonal antibody detects endogenous levels of Epac1 protein.

DATA:



Western blot analysis of Epac1 on mouse kidney tissue lysate using anti-Epac1 antibody at 1/1,000 dilution.



Immunohistochemical analysis of paraffin-embedded human prostate tissue using anti-Epac1 antibody. Counter stained with hematoxylin.

Note:

For research use only, not for use in diagnostic procedure.

Bioworld Technology, Inc.

Add: 1660 South Highway 100, Suite 500 St. Louis Park, MN 55416, USA.

Email: info@bioworld.com

Tel: 6123263284

Fax: 6122933841

Bioworld technology, co. Ltd.

Add: No 9, weidi road Qixia District Nanjing, 210046, P. R. China.

Email: info@biogot.com

Tel: 0086-025-68037686

Fax: 0086-025-68035151