

EpCAM polyclonal antibody

Catalog: BS90466

Host: Rabbit

Reactivity: Human, Mouse, Rat

BackGround:

The epithelial cell adhesion molecule Ep-CAM, which is also designated tumor-associated calcium signal transducer 1 and MK-1, is a monomeric membrane glycoprotein that is expressed in most normal human epithelium and carcinomas. The human Ep-CAM gene encodes a 314 amino acid protein that is expressed as two forms, a major form and a minor form, which are reduced upon treatment with the amino-glycosylation inhibitor tunicamycin. Ep-CAM is overexpressed in a variety of carcinomas and is, therefore, a potential target for the visualization and therapy of human solid tumors. Ep-CAM contains an extracellular domain containing two epidermal growth factor-like repeats, followed by a cysteine poor region, which is necessary for the adhesion properties of the molecule.

Product:

Rabbit IgG, 1mg/ml in PBS with 0.02% sodium azide, 50% glycerol, pH7.2

Molecular Weight:

35 kDa

Swiss-Prot:

P16422(Human) Q99JW5(Mouse) O55159(Rat)

Purification&Purity:

Peptide affinity purified.

Applications:

WB:1:500

ICC:1:100

IHC:1:50-1:200

Storage&Stability:

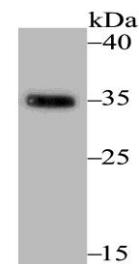
Store at +4 °C after thawing. Aliquot store at -20 °C. Avoid

repeated freeze / thaw cycles.

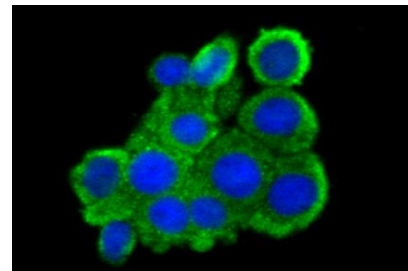
Specificity:

EpCAM polyclonal antibody detects endogenous levels of EpCAM protein.

DATA:



Western blot analysis of EpCAM on mouse colon tissue lysate using anti-EpCAM antibody at 1/500 dilution.



ICC staining EpCAM in LOVO cells (green). The nuclear counter stain is DAPI (blue). Cells were fixed in paraformaldehyde, permeabilised with 0.25% Triton X100/PBS.

Note:

For research use only, not for use in diagnostic procedure.

Bioworld Technology, Inc.

Add: 1660 South Highway 100, Suite 500 St. Louis Park, MN 55416, USA.

Email: info@bioworld.com

Tel: 6123263284

Fax: 6122933841

Bioworld technology, co. Ltd.

Add: No 9, weidi road Qixia District Nanjing, 210046, P. R. China.

Email: info@biogot.com

Tel: 0086-025-68037686

Fax: 0086-025-68035151