

Ephrin B2 polyclonal antibody

Catalog: BS90467

Host: Rabbit

Reactivity: Human, Mouse, Rat

BackGround:

Ephrin-B and are conserved cytoplasmic tyrosine residues that are Eph receptors and ephrins optimistic supporting expression in many cases during embryogenesis and ephrin-B proteins may occur in expression domain interfaces. The transmembrane ligand ephrin-B2 and its receptor tyrosine Order a copy of this thesis Bidirectional signals mediated by both proteins play an important role in vascular development. Ephrin-B2 is essential for the normal morphogenesis of the embryonic vasculature and is angiogenic in tumors. It has been Identified as an important target of chemotheiples treatments.

Product:

Rabbit IgG, 1mg/ml in PBS with 0.02% sodium azide, 50% glycerol, pH7.2

Molecular Weight:

50 kDa

Swiss-Prot:

P52799(Human) P52800(Mouse)

Purification&Purity:

ProA affinity purified

Applications:

WB:1:500-1:1,000

ICC:1:50-1:200

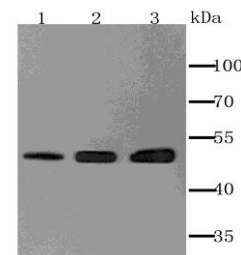
Storage&Stability:

Store at +4 °C after thawing. Aliquot store at -20 °C or -80 °C. Avoid repeated freeze / thaw cycles.

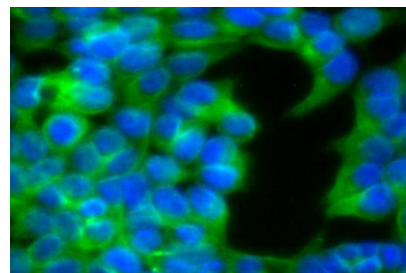
Specificity:

Ephrin B2 polyclonal antibody detects endogenous levels of Ephrin B2 protein.

DATA:



Western blot analysis of Ephrin B2 on different tissue lysate using anti-Ephrin B2 antibody at 1/1,000 dilution. Positive control: Lane1: Human kidney Lane2: Mouse lung Lane3: Rat brain



ICC staining Ephrin B2 in 293T cells (green). The nuclear counter stain is DAPI (blue). Cells were fixed in paraformaldehyde, permeabilised with 0.25% Triton X100/PBS.

Note:

For research use only, not for use in diagnostic procedure.

Bioworld Technology, Inc.

Add: 1660 South Highway 100, Suite 500 St. Louis Park, MN 55416, USA.

Email: info@bioworld.com

Tel: 6123263284

Fax: 6122933841

Bioworld technology, co. Ltd.

Add: No 9, weidi road Qixia District Nanjing, 210046, P. R. China.

Email: info@biogot.com

Tel: 0086-025-68037686

Fax: 0086-025-68035151