

ERGI3 polyclonal antibody

Catalog: BS90468

Host: Rabbit

Reactivity: Human, Mouse, Rat

BackGround:

Belongs to the ERGIC family. The ERGIC lies between the rough endoplasmic reticulum and Golgi on the secretory pathway. The vesicular-tubular cluster (VTC), also referred to as the ER-Golgi intermediate compartment (or ERGIC), is an organelle in eukaryotic cells. This compartment mediates trafficking between the endoplasmic reticulum and Golgi complex, facilitating the sorting of cargo. ERGI3 possible role in transport between endoplasmic reticulum and Golgi.

Product:

Rabbit IgG, 1mg/ml in PBS with 0.02% sodium azide, 50% glycerol, pH7.2

Molecular Weight:

55 kDa

Swiss-Prot:

Q9Y282(Human) Q9CQE7(Mouse)

Purification&Purity:

Peptide affinity purified.

Applications:

WB:1:500

ICC:1:50-1:200

IHC:1:50-1:200

FC:1:50-1:100

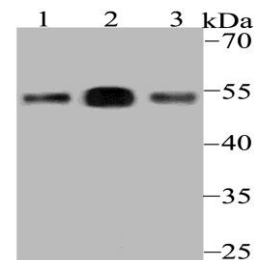
Storage&Stability:

Store at +4 °C after thawing. Aliquot store at -20 °C. Avoid repeated freeze / thaw cycles.

Specificity:

ERGI3 polyclonal antibody detects endogenous levels of ERGI3 protein.

DATA:



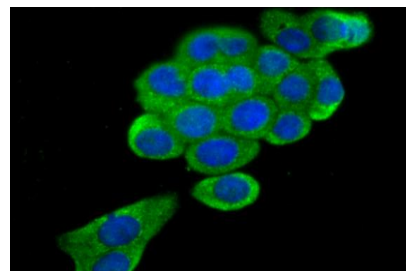
Western blot analysis of ERGI3 on different lysates using anti-ERGI3 antibody at 1/500 dilution.

Positive control:

Lane1: SiHa

Lane2: Human placenta

Lane3: Rat bone marrow



ICC staining ERGI3 in LOVO cells (green). The nuclear counter stain is DAPI (blue). Cells were fixed in paraformaldehyde, permeabilised with 0.25% Triton X100/PBS.

Note:

For research use only, not for use in diagnostic procedure.

Bioworld Technology, Inc.

Add: 1660 South Highway 100, Suite 500 St. Louis Park, MN 55416, USA.

Email: info@bioworld.com

Tel: 6123263284

Fax: 6122933841

Bioworld technology, co. Ltd.

Add: No 9, weidi road Qixia District Nanjing, 210046, P. R. China.

Email: info@biogot.com

Tel: 0086-025-68037686

Fax: 0086-025-68035151