

ERK2 polyclonal antibody

Catalog: BS90473

Host: Rabbit

Reactivity: Human, mouse, rat

BackGround:

Serine/threonine kinase which acts as an essential component of the MAP kinase signal transduction pathway. MAPK1/ERK2 and MAPK3/ERK1 are the 2 MAPKs which play an important role in the MAPK/ERK cascade. They participate also in a signaling cascade initiated by activated KIT and KITLG/SCF. Depending on the cellular context, the MAPK/ERK cascade mediates diverse biological functions such as cell growth, adhesion, survival and differentiation through the regulation of transcription, translation, cytoskeletal rearrangements. The MAPK/ERK cascade plays also a role in initiation and regulation of meiosis, mitosis, and postmitotic functions in differentiated cells by phosphorylating a number of transcription factors.

Product:

Rabbit IgG, 1mg/ml in PBS with 0.02% sodium azide, 50% glycerol, pH7.2

Molecular Weight:

42 kDa

Swiss-Prot:

P28482

Purification&Purity:

Peptide affinity purified

Applications:

WB:1:1,000-1:2,000

ICC:1:200

IHC:1:200

FC:1:100-1:200

Storage&Stability:

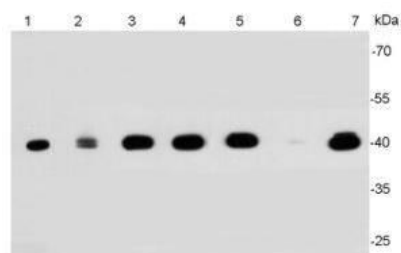
Store at +4 °C after thawing. Aliquot store at -20 °C or

-80 °C. Avoid repeated freeze / thaw cycles.

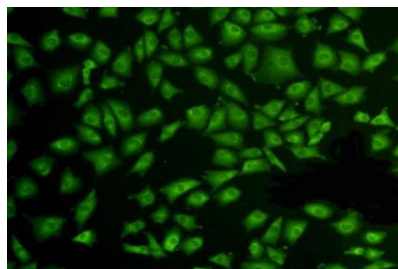
Specificity:

ERK2 polyclonal antibody detects endogenous levels of ERK2 protein.

DATA:



Western blot analysis of ERK2 on different cell lysates using anti-ERK2 antibody at 1/2000 dilution. Positive control: Lane 1: Jurkat Lane 2:A431 Lane 3: PC12 Lane 4: NIH/3T3 Lane 5: HeLa Lane 6: HT-29 Lane 7: MCF-7



ICC staining of ERK2 in A549 cells (green). Cells were fixed in para-formaldehyde, permeabilised with 0.25% Triton X100/PBS.

Note:

For research use only, not for use in diagnostic procedure.

Bioworld Technology, Inc.

Add: 1660 South Highway 100, Suite 500 St. Louis Park, MN 55416, USA.

Email: info@bioworld.com

Tel: 6123263284

Fax: 6122933841

Bioworld technology, co. Ltd.

Add: No 9, weidi road Qixia District Nanjing, 210046, P. R. China.

Email: info@biogot.com

Tel: 0086-025-68037686

Fax: 0086-025-68035151