

ERp29 polyclonal antibody

Catalog: BS90476

Host: Rabbit

Reactivity: Human, Mouse, Rat

BackGround:

ERp29 is a reticuloplasmin, a protein which resides in the lumen of the endoplasmic reticulum (ER). The protein shows sequence similarity to the protein disulfide-isomerase family. However, it lacks the thioredoxin motif characteristic of this family, suggesting that this protein does not function as a disulfide isomerase. The protein dimerizes and is thought to play a role in the processing of secretory proteins within the ER. Alternative splicing results in multiple transcript variants encoding different isoforms.

Product:

Rabbit IgG, 1mg/ml in PBS with 0.02% sodium azide, 50% glycerol, pH7.2

Molecular Weight:

29 kDa

Swiss-Prot:

P30040(Human) P57759(Mouse) P52555(Rat)

Purification&Purity:

ProA affinity purified

Applications:

WB:1:500-1:1,000

ICC:1:50-1:200

IHC:1:50-1:200

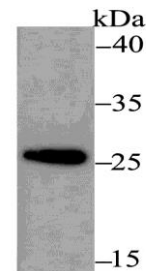
Storage&Stability:

Store at +4 °C after thawing. Aliquot store at -20 °C. Avoid repeated freeze / thaw cycles.

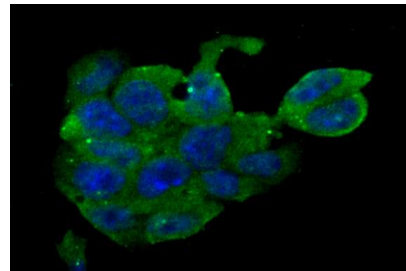
Specificity:

ERp29 polyclonal antibody detects endogenous levels of ERp29 protein.

DATA:



Western blot analysis of ERp29 on THP-1 cell using anti-ERp29 antibody at 1/500 dilution.



ICC staining ERp29 in F9 cells (green). The nuclear counter stain is DAPI (blue). Cells were fixed in paraformaldehyde, permeabilised with 0.25% Triton X100/PBS.

Note:

For research use only, not for use in diagnostic procedure.

Bioworld Technology, Inc.

Add: 1660 South Highway 100, Suite 500 St. Louis Park, MN 55416, USA.

Email: info@bioworld.com

Tel: 6123263284

Fax: 6122933841

Bioworld technology, co. Ltd.

Add: No 9, weidi road Qixia District Nanjing, 210046, P. R. China.

Email: info@biogot.com

Tel: 0086-025-68037686

Fax: 0086-025-68035151