

## ERp57 polyclonal antibody

Catalog: BS90477

Host: Rabbit

Reactivity: Human

### BackGround:

Mammals defend themselves against intracellular pathogens through presentation of cytoplasmically-derived short pathogenic peptides to the cell surface of cytotoxic T lymphocytes, which subsequently leads to cytotoxic events with respect to the affected cell. Antigen presentation is mediated by major histocompatibility complex (MHC) class I molecules, which bind and coordinate short pathogenic peptides. MHC class I molecules assemble in the endoplasmic reticulum with chaperones before binding to the transporter associated with antigen processing (TAP). ERp57, also designated GRP57, GRP58, ERp60 and ERp61, is a component of the MHC class I pathway that appears to interact with MHC class I molecules before they associate with TAP. The human ERp57 gene maps to chromosome 15q15 and encodes a 505 amino acid protein. ERp57 has two Trp-Cys-Gly-His-Cys-Lys motifs completely conserved among the mammals. ERp57 may act as a protease, a protein disulfide isomerase, a phospholipase or a combination of these.

### Product:

Rabbit IgG, 1mg/ml in PBS with 0.02% sodium azide, 50% glycerol, pH7.2

### Molecular Weight:

55 kDa

### Swiss-Prot:

P30101(Human)

### Purification&Purity:

ProA affinity purified

### Applications:

WB:1:500-1:1,000

IHC:1:50-1:200

IP:1:10-1:50

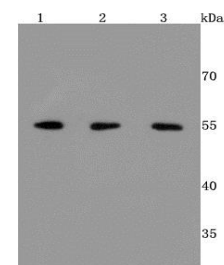
### Storage&Stability:

Store at +4 °C after thawing. Aliquot store at -20 °C or -80 °C. Avoid repeated freeze / thaw cycles.

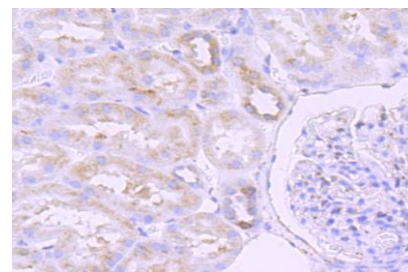
### Specificity:

ERp57 polyclonal antibody detects endogenous levels of ERp57 protein.

### DATA:



Western blot analysis of ERp57 on different cells lysates using anti-ERp57 antibody at 1/500 dilution. Positive control: Line 1: Hela Line 2: HepG2 Line 3: 293T



Immunohistochemical analysis of paraffin-embedded human kidney tissue using anti-ERp57 antibody. Counter stained with hematoxylin.

### Note:

For research use only, not for use in diagnostic procedure.

### Bioworld Technology, Inc.

Add: 1660 South Highway 100, Suite 500 St. Louis Park, MN 55416, USA.

Email: [info@bioworld.com](mailto:info@bioworld.com)

Tel: 6123263284

Fax: 6122933841

### Bioworld technology, co. Ltd.

Add: No 9, weidi road Qixia District Nanjing, 210046, P. R. China.

Email: [info@biogot.com](mailto:info@biogot.com)

Tel: 0086-025-68037686

Fax: 0086-025-68035151