

## ESRRA polyclonal antibody

Catalog: BS90480

Host: Rabbit

Reactivity: Human

### BackGround:

Estrogen related receptor alpha (ERR $\alpha$ ) is a nuclear receptor in the superfamily of ligand-regulated transcription factors and is a member of the NR3B orphan nuclear receptor subgroup (consisting of  $\alpha$ ,  $\beta$  and  $\gamma$ ). ERR $\alpha$  plays a role in modulating the estrogen signaling pathway. In addition, the expression of ERR $\alpha$  has been shown to increase during fasting and cold exposure. ERR $\alpha$  may be important for regulating mitochondrial biogenesis and oxidative metabolism by acting directly on genes necessary for mitochondrial function. Mice lacking ERR $\alpha$  are unable to maintain their body temperature in the cold. ERR $\alpha$  may also be involved in the maintenance and formation of cartilage. This information could be useful in finding therapeutic agents for a variety of diseases affecting the joints.

### Product:

Rabbit IgG, 1mg/ml in PBS with 0.02% sodium azide, 50% glycerol, pH7.2

### Molecular Weight:

53 kDa

### Swiss-Prot:

P11474(Human)

### Purification&Purity:

Protein affinity purified.

### Applications:

WB:1:500

FC:1:50-1:100

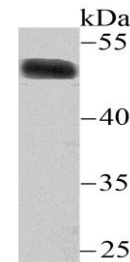
### Storage&Stability:

Store at +4 °C after thawing. Aliquot store at -20 °C or -80 °C. Avoid repeated freeze / thaw cycles.

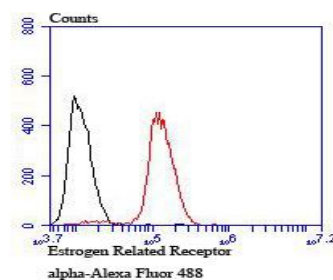
### Specificity:

ESRRA polyclonal antibody detects endogenous levels of ESRRA protein.

### DATA:



Western blot analysis of Estrogen Related Receptor alpha on MCF-7 cell lysate using anti-Estrogen Related Receptor alpha antibody at 1/200 dilution.



Flow cytometric analysis of MCF-7 cells with Estrogen Related Receptor alpha antibody at 1/100 dilution (red) compared with an unlabelled control (cells without incubation with primary antibody; black). Alexa Fluor 488-conjugated goat anti rabbit IgG was used as the secondary antibody.

### Note:

For research use only, not for use in diagnostic procedure.

### Bioworld Technology, Inc.

Add: 1660 South Highway 100, Suite 500 St. Louis Park, MN 55416, USA.

Email: [info@bioworld.com](mailto:info@bioworld.com)

Tel: 6123263284

Fax: 6122933841

### Bioworld technology, co. Ltd.

Add: No 9, weidi road Qixia District Nanjing, 210046, P. R. China.

Email: [info@biogot.com](mailto:info@biogot.com)

Tel: 0086-025-68037686

Fax: 0086-025-68035151