

ET-BR polyclonal antibody

Catalog: BS90482

Host: Rabbit

Reactivity: Human, Zebrafish

BackGround:

Endothelin receptor B (ETBR), also known as EDNRB, ETB, ETRB, HSCR and HSCR2, is a member of the guanine-binding, regulatory protein-coupled receptor family. Three isoforms of ETBR exist called isoform 1, isoform 2 and δ 3. ETBR is involved in the regulation of sodium excretion and glomerular filtration rate (GFR). ETBR plays a role in the normal development of the neural crest-derived cell lineages, epidermal melanocytes and enteric neurons. ETBR is expressed in lung, kidney, placenta, skeletal muscle and stem villi vessels. Both of the ET receptors, ETAR and ETBR, are activated by ET1, which results in inhibition of active lens sodium-potassium transport. Activation of the ET receptors also causes an increase in cytoplasmic calcium concentration in cultured lens epithelial cells. ETBR deficiency causes early onset dysfunction of the kidney, characterized by reduced sodium excretion, decreased GFR and slightly elevated blood pressure. Mutations in the gene encoding ETBR produce congenital aganglionic megacolon and pigment abnormalities. The multigenic disorder, Hirschsprung's disease type 2, is also due to a mutation in the ETBR gene.

Product:

Rabbit IgG, 1mg/ml in PBS with 0.02% sodium azide, 50% glycerol, pH7.2

Molecular Weight:

50 kDa

Swiss-Prot:

P24530(Human)

Purification&Purity:

ProA affinity purified

Applications:

WB:1:500-1:2,000

IP:1:10-1:50

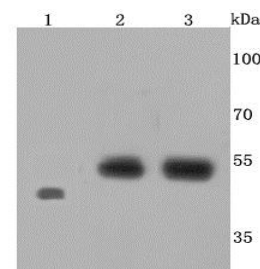
Storage&Stability:

Store at +4 °C after thawing. Aliquot store at -20 °C or -80 °C. Avoid repeated freeze / thaw cycles.

Specificity:

ET-BR polyclonal antibody detects endogenous levels of ET-BR protein.

DATA:



Western blot analysis of Endothelin B Receptor on different cells lysates using anti-Endothelin B Receptor antibody at 1/500 dilution. Positive control: Lane 1: Zebrafish Lane 2: Raji Line 3: JAR

Note:

For research use only, not for use in diagnostic procedure.

Bioworld Technology, Inc.

Add: 1660 South Highway 100, Suite 500 St. Louis Park, MN 55416, USA.

Email: info@bioworld.com

Tel: 6123263284

Fax: 6122933841

Bioworld technology, co. Ltd.

Add: No 9, weidi road Qixia District Nanjing, 210046, P. R. China.

Email: info@biogot.com

Tel: 0086-025-68037686

Fax: 0086-025-68035151