

Exportin-2 polyclonal antibody

Catalog: BS90484

Host: Rabbit

Reactivity: Human, Mouse, Rat

BackGround:

Cellular apoptosis susceptibility protein (CAS), also called Exportin 2, is a 971 amino acid member of the CSE1 family. CAS mediates Importin α re-export from the nucleus to the cytoplasm after import substrates have been released into the nucleoplasm. In the nucleus, CAS binds cooperatively to Importin α and to the GTPase Ran in its GTP-bound (active) form. This complex binds to nucleoporins as it docks to the nuclear pore complex. Once in the cytoplasm, the complex dissociates and Importin α is released and CAS returns to the nuclear compartment and the process begins anew. CAS can be detected highly in proliferating cells. Three isoforms of CAS have been named due to alternative splicing. Isoform 1 is the full length, 971 amino acid protein. Isoform 2 contains an alternative sequence for amino acids 190-195 and is missing amino acids 196-971. Isoform 3 contains an alternative sequence for amino acids 943-945 and is missing amino acids 946-971.

Product:

Rabbit IgG, 1mg/ml in PBS with 0.02% sodium azide, 50% glycerol, pH7.2

Molecular Weight:

110 kDa

Swiss-Prot:

P55060(Human) Q9ERK4(Mouse)

Purification&Purity:

ProA affinity purified

Applications:

WB:1:500-1:1,000

ICC:1:50-1:200

IHC:1:50-1:200

FC:1:50-1:100

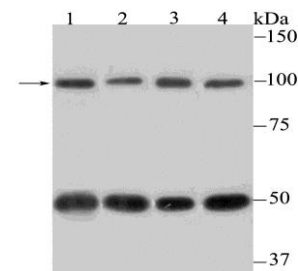
Storage&Stability:

Store at +4 °C after thawing. Aliquot store at -20 °C or -80 °C. Avoid repeated freeze / thaw cycles.

Specificity:

Exportin-2 polyclonal antibody detects endogenous levels of Exportin-2 protein.

DATA:



Western blot analysis of Cellular Apoptosis Susceptibility on different lysates using anti-Cellular Apoptosis Susceptibility antibody at 1/500 dilution.

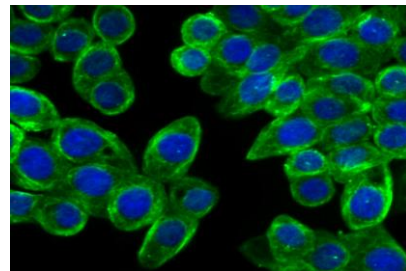
Positive control:

Lane 1: Mouse testis

Lane 2: SiHa

Lane 3: SK-BR-3

Lane 4: PC-3M



ICC staining Cellular Apoptosis Susceptibility in LOVO cells (green). The nuclear counter stain is DAPI (blue). Cells were fixed in paraformaldehyde, permeabilised with 0.25% Triton X100/PBS.

Note:

For research use only, not for use in diagnostic procedure.

Bioworld Technology, Inc.

Add: 1660 South Highway 100, Suite 500 St. Louis Park, MN 55416, USA.

Email: info@bioworld.com

Tel: 6123263284

Fax: 6122933841

Bioworld technology, co. Ltd.

Add: No 9, weidi road Qixia District Nanjing, 210046, P. R. China.

Email: info@biogot.com

Tel: 0086-025-68037686

Fax: 0086-025-68035151



PRODUCT DATA SHEET

Bioworld Technology, Inc.

Bioworld Technology, Inc.

Add: 1660 South Highway 100, Suite 500 St. Louis Park,
MN 55416, USA.

Email: info@bioworld.com

Tel: 6123263284

Fax: 6122933841

Bioworld technology, co. Ltd.

Add: No 9, weidi road Qixia District Nanjing, 210046,
P. R. China.

Email: info@biogot.com

Tel: 0086-025-68037686

Fax: 0086-025-68035151