

## Exportin-5 polyclonal antibody

Catalog: BS90485

Host: Rabbit

Reactivity: Human, Mouse, Rat

### BackGround:

The karyopherin-related nuclear transport factor Exportin 5, also known as Exp5, preferentially recognizes and transports RNAs containing minihelix motifs, structural cis-acting export elements that comprise a double-stranded stem (14 nucleotides) with a base-paired 5' end and a 3-8-nucleotide protruding 3' end. Exportin 5 also mediates protein transport between the nuclear and cytoplasmic compartment. Exportin 5 belongs to a large family of karyopherins and stimulates nuclear export of dsRNA binding proteins eEF1A and tRNA.

### Product:

Rabbit IgG, 1mg/ml in PBS with 0.02% sodium azide, 50% glycerol, pH7.2

### Molecular Weight:

136 kDa

### Swiss-Prot:

Q9HAV4(Human)

### Purification&Purity:

ProA affinity purified

### Applications:

WB:1:500-1:2,000

IHC:1:100-1:400

FC:1:50-1:100

ICC/IF:1:100

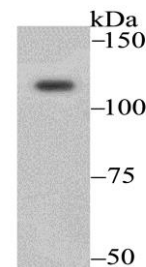
### Storage&Stability:

Store at +4 °C after thawing. Aliquot store at -20 °C. Avoid repeated freeze / thaw cycles.

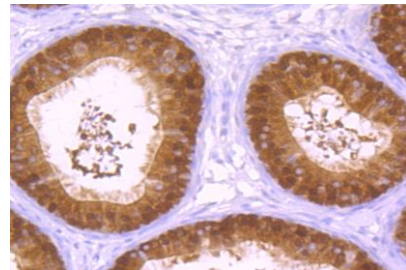
### Specificity:

Exportin-5 polyclonal antibody detects endogenous levels of Exportin-5 protein.

### DATA:



Western blot analysis of Exportin-5 on 293 cells using anti-Exportin-5 antibody at 1/2,000 dilution.



Immunohistochemical analysis of paraffin-embedded rat epididymis tissue using anti-Exportin-5 antibody. Counter stained with hematoxylin.

### Note:

For research use only, not for use in diagnostic procedure.

### Bioworld Technology, Inc.

Add: 1660 South Highway 100, Suite 500 St. Louis Park, MN 55416, USA.

Email: [info@bioworld.com](mailto:info@bioworld.com)

Tel: 6123263284

Fax: 6122933841

### Bioworld technology, co. Ltd.

Add: No 9, weidi road Qixia District Nanjing, 210046, P. R. China.

Email: [info@biogot.com](mailto:info@biogot.com)

Tel: 0086-025-68037686

Fax: 0086-025-68035151