

## Ferritin Light Chain polyclonal antibody

Catalog: BS90502

Host: Rabbit

Reactivity: Human, Mouse, Rat

### BackGround:

Mammalian ferritins consist of 24 subunits made up of two types of polypeptide chains, ferritin heavy chain and ferritin light chain, which each have unique functions. Ferritin heavy chains catalyze the first step in iron storage, the oxidation of Fe (II), whereas ferritin light chains promote the nucleation of ferrihydrite, enabling storage of Fe (III). The most prominent role of mammalian ferritins is to provide iron-buffering capacity to cells. In addition to iron buffering, heavy chain ferritin is also involved in the regulation of thymidine biosynthesis via increased expression of cytoplasmic serine hydroxymethyltransferase, which is a limiting factor in thymidylate synthesis in MCF-7 cells. Light chain ferritin is involved in cataracts by at least two mechanisms, hereditary hyperferritinemia cataract syndrome, in which light chain ferritin is overexpressed, and oxidative stress, an important factor in the development of ageing-related cataracts. The gene encoding human ferritin heavy chain maps to chromosome 11q13 and the human ferritin light chain gene maps to chromosome 19q13.3-q13.4.

### Product:

Rabbit IgG, 1mg/ml in PBS with 0.02% sodium azide, 50% glycerol, pH7.2

### Molecular Weight:

54 kDa

### Swiss-Prot:

P02792(Human) P29391(Mouse) P02793(Rat)

### Purification&Purity:

ProA affinity purified

### Applications:

WB:1:1,000-1:5,000

IHC:1:100-1:500

ICC:1:100-1:200

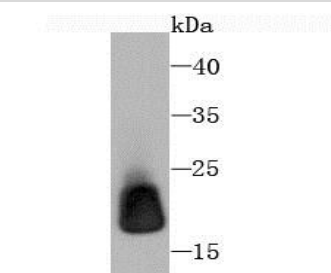
### Storage&Stability:

Store at +4 °C after thawing. Aliquot store at -20 °C or -80 °C. Avoid repeated freeze / thaw cycles.

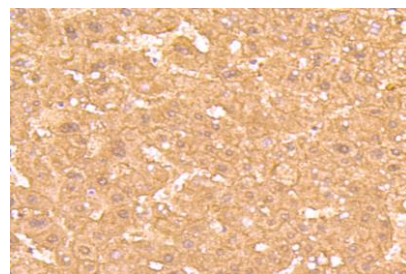
### Specificity:

Ferritin Light Chain polyclonal antibody detects endogenous levels of Ferritin Light Chain protein.

### DATA:



Western blot analysis of Ferritin Light Chain on rat liver tissue lysate using anti-Ferritin Light Chain antibody at 1/1,000 dilution.



Immunohistochemical analysis of paraffin-embedded human liver tissue using anti-Ferritin Light Chain antibody. Counter stained with hematoxylin.

### Note:

For research use only, not for use in diagnostic procedure.

### Bioworld Technology, Inc.

Add: 1660 South Highway 100, Suite 500 St. Louis Park, MN 55416, USA.

Email: [info@bioworld.com](mailto:info@bioworld.com)

Tel: 6123263284

Fax: 6122933841

### Bioworld technology, co. Ltd.

Add: No 9, weidi road Qixia District Nanjing, 210046, P. R. China.

Email: [info@biogot.com](mailto:info@biogot.com)

Tel: 0086-025-68037686

Fax: 0086-025-68035151