

FGFR1 polyclonal antibody

Catalog: BS90506

Host: Rabbit

Reactivity: Human

BackGround:

Acidic and basic fibroblast growth factors (FGFs) are members of a family of multifunctional polypeptide growth factors that stimulate proliferation of cells of mesenchymal, epithelial and neuroectodermal origin. Like other growth factors, FGFs act by binding and activating specific cell surface receptors. These include the Flg receptor (FGFR-1), the Bek receptor (FGFR-2), FGFR-3, FGFR-4, FGFR-5 and FGFR-6. These receptors usually contain an extracellular ligand-binding region containing three immunoglobulin-like domains, a trans-membrane domain and a cytoplasmic tyrosine kinase domain. The gene encoding human Flg maps to chromosome 8p12 and is alternatively spliced to produce several isoforms. Mutations in Flg are associated with Pfeiffer syndrome (a skeletal disorder characterized by cranio-synostosis with deviation and enlargement of the thumbs and great toes), brachymesophalangy with phalangeal ankylosis and a varying degree of soft tissue syndactyly. The Flg gene is also involved in chromosomal translocations with ZNF198, CEP110 and FOP, which may lead to stem cell leukemia lymphoma (SCLL).

Product:

Rabbit IgG, 1mg/ml in PBS with 0.02% sodium azide, 50% glycerol, pH7.2

Molecular Weight:

100,140 kDa

Swiss-Prot:

P11362(Human)

Purification&Purity:

ProA affinity purified

Applications:

WB:1:1,000

ICC:1:50-1:100

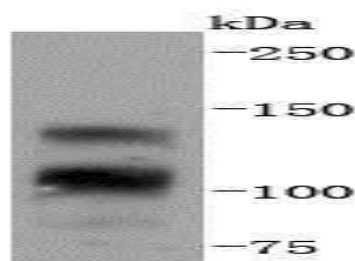
Storage&Stability:

Store at +4 °C after thawing. Aliquot store at -20 °C or -80 °C. Avoid repeated freeze / thaw cycles.

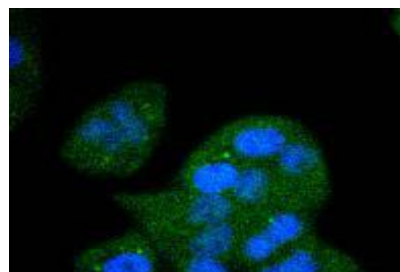
Specificity:

FGFR1 polyclonal antibody detects endogenous levels of FGFR1 protein.

DATA:



Western blot analysis of FGFR1 on 293 cells lysates using anti-FGFR1 antibody at 1/1,000 dilution.



ICC staining FGFR1 in HeLa cells (green). The nuclear counter stain is DAPI (blue). Cells were fixed in paraformaldehyde, permeabilised with 0.25% Triton X100/PBS.

Note:

For research use only, not for use in diagnostic procedure.

Bioworld Technology, Inc.

Add: 1660 South Highway 100, Suite 500 St. Louis Park, MN 55416, USA.

Email: info@bioworld.com

Tel: 6123263284

Fax: 6122933841

Bioworld technology, co. Ltd.

Add: No 9, weidi road Qixia District Nanjing, 210046, P. R. China.

Email: info@biogot.com

Tel: 0086-025-68037686

Fax: 0086-025-68035151