

## FHL2 polyclonal antibody

Catalog: BS90510

Host: Rabbit

Reactivity: Human, Mouse, Rat

### Background:

The four-and-a-half-LIM domain (FHL) proteins include FHL-1 (SLIM1), FHL-2 (SLIM3), FHL-3 (SLIM2) and FHL-4. The signature "half-domain", a single zinc finger domain located in the N-terminal region, differentiates FHLs from other LIM-only proteins, which have numbers of zinc fingers. Specific combinations of FHL proteins elicit selective activation of both CREB and CREM. Skeletal and cardiac muscle express FHL-1 in high levels as compared to the low level of expression in smooth muscle of the colon, small intestine and prostate. FHL-1 localizes to the cytosol of myoblasts, myotubes, and differentiated myocytes. FHL-2 is also located in cardiac and skeletal muscle, as well as in placenta and ovary tissues. FHL-3 is found in skeletal muscle, but absent in cardiac muscle. FHL-4 is expressed exclusively by the seminiferous epithelium of the testis, which suggests that FHL-4 is involved in spermatogenesis. The genetic loci for FHLs vary considerably despite similar amino acid sequences among the FHL group.

### Product:

Rabbit IgG, 1mg/ml in PBS with 0.02% sodium azide, 50% glycerol, pH7.2

### Molecular Weight:

32 kDa

### Swiss-Prot:

Q14192(Human) O70433(Mouse) O35115(Rat)

### Purification&Purity:

ProA affinity purified

### Applications:

WB:1:500-1:2,000

IHC:1:50-1:200

IP:1:10-1:50

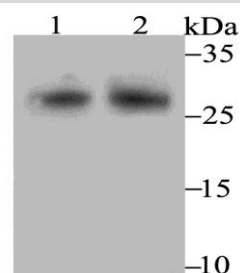
### Storage&Stability:

Store at +4 °C after thawing. Aliquot store at -20 °C. Avoid repeated freeze / thaw cycles.

### Specificity:

FHL2 polyclonal antibody detects endogenous levels of FHL2 protein.

### DATA:

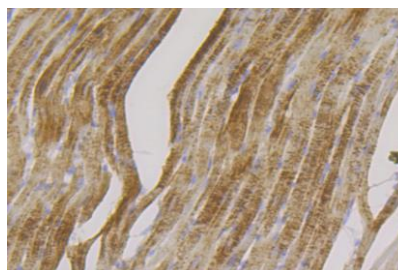


Western blot analysis of FHL2 on different tissue lysates using anti-FHL2 antibody at 1/1,000 dilution.

Positive control:

Lane 1: Rat heart

Lane 2: Mouse heart



Immunohistochemical analysis of paraffin-embedded rat heart tissue using anti-FHL2 antibody. Counter stained with hematoxylin.

### Note:

For research use only, not for use in diagnostic procedure.

### Bioworld Technology, Inc.

Add: 1660 South Highway 100, Suite 500 St. Louis Park, MN 55416, USA.

Email: [info@bioworld.com](mailto:info@bioworld.com)

Tel: 6123263284

Fax: 6122933841

### Bioworld technology, co. Ltd.

Add: No 9, weidi road Qixia District Nanjing, 210046, P. R. China.

Email: [info@biogot.com](mailto:info@biogot.com)

Tel: 0086-025-68037686

Fax: 0086-025-68035151