

## Fibrinogen polyclonal antibody

Catalog: BS90512

Host: Rabbit

Reactivity: Human, Mouse

### BackGround:

The plasma glycoprotein Fibrinogen is synthesized in the liver and comprises three structurally different subunits: a, b and g. Fibrinogen is important in platelet aggregation, the final step of the coagulation cascade (i.e. the formation of Fibrin) and determination of plasma viscosity and erythrocyte aggregation. It is both constitutively expressed and inducible during an acute phase reaction. Hemostasis following tissue injury deploys essential plasma procoagulants (Prothrombin and Factors X, IX, V and VIII), which are involved in a blood coagulation cascade leading to the formation of insoluble Fibrin clots and the promotion of platelet aggregation. Following vascular injury, Fibrinogen is cleaved by Thrombin to form Fibrin, which is the most abundant component of blood clots. The cleavage products of Fibrinogen regulate cell adhesion and spreading, display vasoconstrictor and chemotactic activities, and are mitogens for several cell types.

### Product:

Rabbit IgG, 1mg/ml in PBS with 0.02% sodium azide, 50% glycerol, pH7.2

### Molecular Weight:

70/55 kDa

### Swiss-Prot:

P02671/P02675/P02679(Human)

### Purification&Purity:

ProA affinity purified

### Applications:

WB:1:500

ICC:1:100-1:500

FC:1:50-1:100

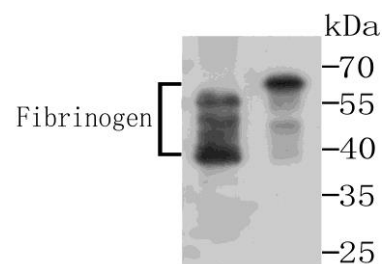
### Storage&Stability:

Store at +4 °C after thawing. Aliquot store at -20 °C or -80 °C. Avoid repeated freeze / thaw cycles.

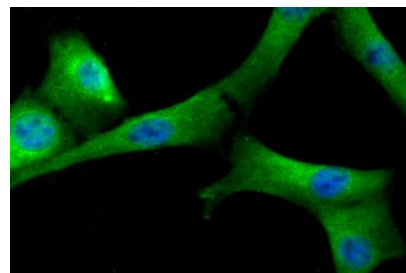
### Specificity:

Fibrinogen polyclonal antibody detects endogenous levels of Fibrinogen protein.

### DATA:



Western blot analysis of Fibrinogen on mouse bone marrow and human kidney tissue lysates using anti-Fibrinogen antibody at 1/500 dilution.



ICC staining Fibrinogen in NIH-3T3 cells (green). The nuclear counter stain is DAPI (blue). Cells were fixed in paraformaldehyde, permeabilised with 0.25% Triton X100/PBS.

### Note:

For research use only, not for use in diagnostic procedure.

### Bioworld Technology, Inc.

Add: 1660 South Highway 100, Suite 500 St. Louis Park, MN 55416, USA.

Email: [info@bioworld.com](mailto:info@bioworld.com)

Tel: 6123263284

Fax: 6122933841

### Bioworld technology, co. Ltd.

Add: No 9, weidi road Qixia District Nanjing, 210046, P. R. China.

Email: [info@biogot.com](mailto:info@biogot.com)

Tel: 0086-025-68037686

Fax: 0086-025-68035151