

G6PD polyclonal antibody

Catalog: BS90548

Host: Rabbit

Reactivity: Human

BackGround:

Glucose-6-phosphate isomerase (GPI) has many other names, including Phosphohexose isomerase (PHI), Neuroleukin (NLK) and Spermantigen-36 (SA-36). GPI is a cytoplasmic homodimer belonging to the GPI family. It is a neurotrophic factor for spinal and sensory neurons and is involved in glycolysis and gluconeogenesis. Defects or mutations in GPI can cause hereditary nonspherocytic hemolytic anemia (HA), hydrops fetalis, immediate neonatal death and neurological impairment.

Product:

Rabbit IgG, 1mg/ml in PBS with 0.02% sodium azide, 50% glycerol, pH7.2

Molecular Weight:

63 kDa

Swiss-Prot:

P06744(Human)

Purification&Purity:

ProA affinity purified

Applications:

WB:1:500-1:1,000

ICC:1:50-1:200

IHC:1:50-1:200

FC:1:50-1:100

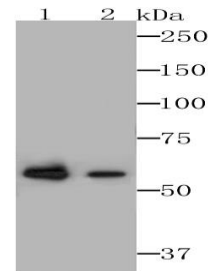
Storage&Stability:

Store at +4 °C after thawing. Aliquot store at -20 °C. Avoid repeated freeze / thaw cycles.

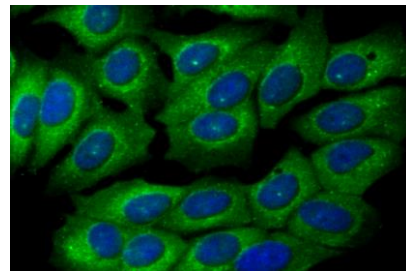
Specificity:

G6PD polyclonal antibody detects endogenous levels of G6PD protein.

DATA:



Western blot analysis of Glucose 6 phosphate isomerase on A549 and HepG2 cells lysates using anti-Glucose 6 phosphate isomerase antibody at 1/1,000 dilution.



ICC staining Glucose 6 phosphate isomerase in MCF-7 cells (green).

The nuclear counter stain is DAPI (blue). Cells were fixed in paraformaldehyde, permeabilised with 0.25% Triton X100/PBS.

Note:

For research use only, not for use in diagnostic procedure.

Bioworld Technology, Inc.

Add: 1660 South Highway 100, Suite 500 St. Louis Park, MN 55416, USA.

Email: info@bioworld.com

Tel: 6123263284

Fax: 6122933841

Bioworld technology, co. Ltd.

Add: No 9, weidi road Qixia District Nanjing, 210046, P. R. China.

Email: info@biogot.com

Tel: 0086-025-68037686

Fax: 0086-025-68035151