

Gli1 polyclonal antibody

Catalog: BS90575

Host: Rabbit

Reactivity: Human, Mouse, Rat

BackGround:

Zinc-finger proteins contain DNA-binding domains and have a wide variety of functions, most of which encompass some form of transcriptional activation or repression. The majority of zinc-finger proteins contain a Krüppel-type DNA binding domain and a KRAB domain, which is thought to interact with KAP1, thereby recruiting histone modifying proteins. GLI-1 (GLI family zinc finger 1), also known as Glioma-associated oncogene or oncogene GLI, is a 1,106 amino acid protein that localizes to both the cytoplasm and nucleus, and belongs to the GLI C2H2-type zinc-finger protein family. GLI-1 acts as a transcriptional activator and is thought to play a role in craniofacial development. GLI-1 exists as two alternatively spliced isoforms and is encoded by a gene that maps to human chromosome 12q13.3.

Product:

Rabbit IgG, 1mg/ml in PBS with 0.02% sodium azide, 50% glycerol, pH7.2

Molecular Weight:

150 kDa

Swiss-Prot:

P08151(Human)

Purification&Purity:

ProA affinity purified

Applications:

WB:1:500-1:1,000

IHC:1:50-1:200

ICC:1:50-1:200

Storage&Stability:

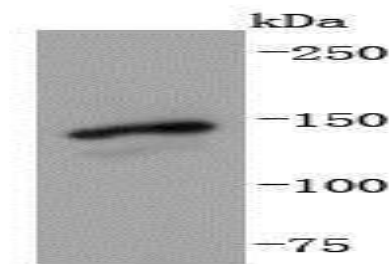
Store at +4 °C after thawing. Aliquot store at -20 °C or

-80 °C. Avoid repeated freeze / thaw cycles.

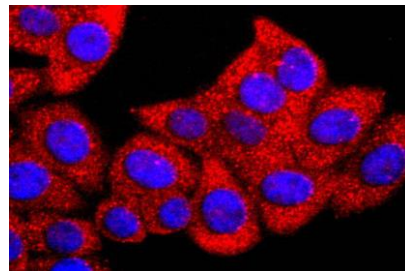
Specificity:

Gli1 polyclonal antibody detects endogenous levels of Gli1 protein.

DATA:



Western blot analysis of Gli1 on SH-SY-5Y cells lysates using anti-Gli1 antibody at 1/1,000 dilution.



ICC staining Gli1 in HepG2 cells (red). The nuclear counter stain is DAPI (blue). Cells were fixed in paraformaldehyde, permeabilised with 0.25% Triton X100/PBS.

Note:

For research use only, not for use in diagnostic procedure.

Bioworld Technology, Inc.

Add: 1660 South Highway 100, Suite 500 St. Louis Park, MN 55416, USA.

Email: info@bioworld.com

Tel: 6123263284

Fax: 6122933841

Bioworld technology, co. Ltd.

Add: No 9, weidi road Qixia District Nanjing, 210046, P. R. China.

Email: info@biogot.com

Tel: 0086-025-68037686

Fax: 0086-025-68035151