

Glutaminase polyclonal antibody

Catalog: BS90586

Host: Rabbit

Reactivity: Human, Mouse, Rat

BackGround:

Glutamine is an important molecule involved in several cellular functions, including nitrogen and carbon transport, hepatic urea synthesis, renal ammoniogenesis, and gluconeogenesis. Glutamine is catabolized by either the liver-type (LGA) or kidney-type (KGA) glutaminase. KGA is mitochondrial specific protein whose expression in kidney is increased during metabolic acidosis. This process is mediated by an 8-base AU-sequence in KGA that functions as a pH-response element. The human KGA gene maps to chromosome 2, and produces three isoforms, designated KGA, GAC, and GAM, by alternative splicing. KGA is synthesized as a cytosolic protein that is transported to the mitochondria as an intermediate protein, and is further cleaved into the KGA isoform and the GAC isoform. The processing of the GAM isoform is unclear. The KGA isoform is abundant in brain and kidney, while the GAC isoform is principally expressed in cardiac muscle and pancreas. The GAM isoform is solely expressed in cardiac and skeletal muscle.

Product:

Rabbit IgG, 1mg/ml in PBS with 0.02% sodium azide, 50% glycerol, pH7.2

Molecular Weight:

65 kDa

Swiss-Prot:

O94925(Human) D3Z7P3(Mouse) P13264(Rat)

Purification&Purity:

ProA affinity purified

Applications:

WB:1:1,000-1:2,000

ICC:1:50-1:200

IHC:1:50-1:200

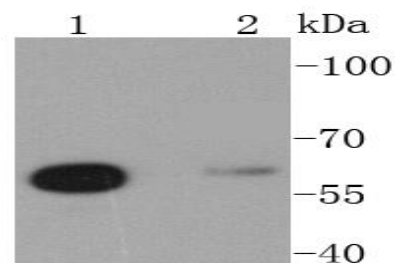
Storage&Stability:

Store at +4 °C after thawing. Aliquot store at -20 °C or -80 °C. Avoid repeated freeze / thaw cycles.

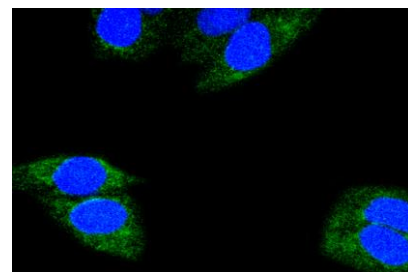
Specificity:

Glutaminase polyclonal antibody detects endogenous levels of Glutaminase protein.

DATA:



Western blot analysis of Glutaminase on different lysates using anti-Glutaminase antibody at 1/1,000 dilution. Positive control: Lane 1: HeLa Lane 2: 293



ICC staining Glutaminase in HeLa cells (green). The nuclear counter stain is DAPI (blue). Cells were fixed in paraformaldehyde, permeabilized with 0.25% Triton X100/PBS.

Note:

For research use only, not for use in diagnostic procedure.

Bioworld Technology, Inc.

Add: 1660 South Highway 100, Suite 500 St. Louis Park, MN 55416, USA.

Email: info@bioworld.com

Tel: 6123263284

Fax: 6122933841

Bioworld technology, co. Ltd.

Add: No 9, weidi road Qixia District Nanjing, 210046, P. R. China.

Email: info@biogot.com

Tel: 0086-025-68037686

Fax: 0086-025-68035151