

GOLPH2 polyclonal antibody

Catalog: BS90588

Host: Rabbit

Reactivity: Human, Mouse, Rat

Background:

GP73 (also known as Golgi phosphoprotein 2, GOLPH 2 or Golgi membrane protein), is a widely expressed, epithelial-specific, type II transmembrane protein which resides in the Golgi apparatus, where it is responsible for the posttranslational modification of proteins produced in the Rough ER while assisting in the transport of proteins through the Golgi. The human GP73 gene has been mapped within a BAC and localized to chromosome 9q21.33. GP73 levels rise in those who have been diagnosed with acute and chronic liver diseases.

Product:

Rabbit IgG, 1mg/ml in PBS with 0.02% sodium azide, 50% glycerol, pH7.2

Molecular Weight:

100 kDa

Swiss-Prot:

Q8NBJ4(Human) Q91XA2(Mouse)

Purification&Purity:

ProA affinity purified

Applications:

WB:1:500-1:2,000

IHC:1:50

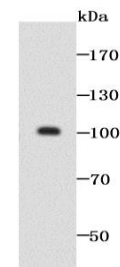
Storage&Stability:

Store at +4 °C after thawing. Aliquot store at -20 °C or -80 °C. Avoid repeated freeze / thaw cycles.

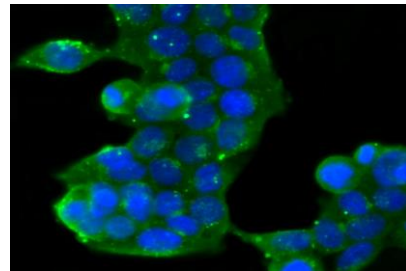
Specificity:

GOLPH2 polyclonal antibody detects endogenous levels of GOLPH2 protein.

DATA:



Western blot analysis of GOLPH2 on SH-SY5Y cell lysate using anti-GOLPH2 antibody at 1/1,000 dilution.



ICC staining GOLPH2 in 293T cells (green). The nuclear counter stain is DAPI (blue). Cells were fixed in paraformaldehyde, permeabilised with 0.25% Triton X100/PBS.

Note:

For research use only, not for use in diagnostic procedure.

Bioworld Technology, Inc.

Add: 1660 South Highway 100, Suite 500 St. Louis Park, MN 55416, USA.

Email: info@bioworld.com

Tel: 6123263284

Fax: 6122933841

Bioworld technology, co. Ltd.

Add: No 9, weidi road Qixia District Nanjing, 210046, P. R. China.

Email: info@biogot.com

Tel: 0086-025-68037686

Fax: 0086-025-68035151