

GPCR RDC1 polyclonal antibody

Catalog: BS90593

Host: Rabbit

Reactivity: Human, Mouse, Rat

Background:

Members of the C-X-C or α chemokine family are characterized by a pair of cysteine residues separated by a single amino acid and primarily function as chemoattractants for neutrophils. The C-X-C family includes IL-8, NAP-2, MSGA and stromal cell derived factor-1 (SDF-1). Receptors for the C-X-C family are G protein-coupled, seven pass transmembrane domain proteins and include proteins such as IL-8RA, IL-8RB, CXCR-3 and fusin (also designated LESTR or CXCR-4). C-X-C chemokine receptor type 7 (CXCR-7), also known as RDC-1, is a 362 amino acid receptor for SDF-1. Initially identified as a receptor for vasoactive intestinal peptide (VIP), it is now considered to be an orphan receptor. CXCR-7, with CSCR-4, also acts as a coreceptor for human immunodeficiency viruses (HIV). Highly expressed in monocytes, B-cells and basophils, and highly active in various biological processes, including cell growth, cell adhesion and tumor growth, CXCR-7 may play a role in tumorigenesis.

Product:

Rabbit IgG, 1mg/ml in PBS with 0.02% sodium azide, 50% glycerol, pH7.2

Molecular Weight:

41 kDa

Swiss-Prot:

P25106(Human) P56485(Mouse) O89039(Rat)

Purification&Purity:

ProA affinity purified

Applications:

WB:1:1,000-1:5,000

FC:1:10-1:100

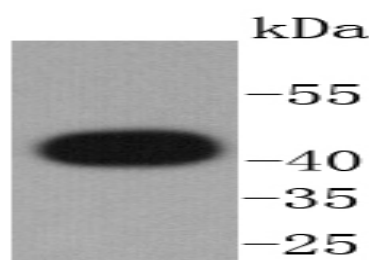
Storage&Stability:

Store at +4 °C after thawing. Aliquot store at -20 °C or -80 °C. Avoid repeated freeze / thaw cycles.

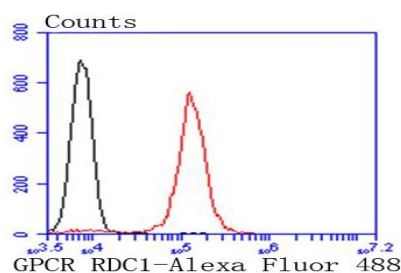
Specificity:

GPCR RDC1 polyclonal antibody detects endogenous levels of GPCR RDC1 protein.

DATA:



Western blot analysis of GPCR RDC1 on PC-3M cells lysates using anti-GPCR RDC1 antibody at 1/1,000 dilution.



Flow cytometric analysis of Jurkat cells with GPCR RDC1 antibody at 1/50 dilution (red) compared with an unlabelled control (cells without incubation with primary antibody; black). Alexa Fluor 488-conjugated goat anti rabbit IgG was used as the secondary antibody.

Note:

For research use only, not for use in diagnostic procedure.

Bioworld Technology, Inc.

Add: 1660 South Highway 100, Suite 500 St. Louis Park, MN 55416, USA.

Email: info@bioworld.com

Tel: 6123263284

Fax: 6122933841

Bioworld technology, co. Ltd.

Add: No 9, weidi road Qixia District Nanjing, 210046, P. R. China.

Email: info@biogot.com

Tel: 0086-025-68037686

Fax: 0086-025-68035151