

GRASP65 polyclonal antibody

Catalog: BS90598

Host: Rabbit

Reactivity: Human

BackGround:

Stacking factor involved in the postmitotic assembly of Golgi stacks from mitotic Golgi fragments. Key structural protein required for the maintenance of the Golgi apparatus integrity: its caspase-mediated cleavage is required for fragmentation of the Golgi during apoptosis (By similarity). Also mediates, via its interaction with GOLGA2/GM130, the docking of transport vesicles with the Golgi membranes.

Product:

Rabbit IgG, 1mg/ml in PBS with 0.02% sodium azide, 50% glycerol, pH7.2

Molecular Weight:

46 kDa (Predicted band size)

Swiss-Prot:

Q9BQQ3(Human)

Purification&Purity:

ProA affinity purified

Applications:

WB:1:500-1:1,000

ICC:1:50-1:200

IHC:1:50-1:200

FC:1:50-1:100

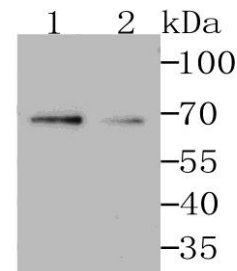
Storage&Stability:

Store at +4 °C after thawing. Aliquot store at -20 °C or -80 °C. Avoid repeated freeze / thaw cycles.

Specificity:

GRASP65 polyclonal antibody detects endogenous levels of GRASP65 protein.

DATA:

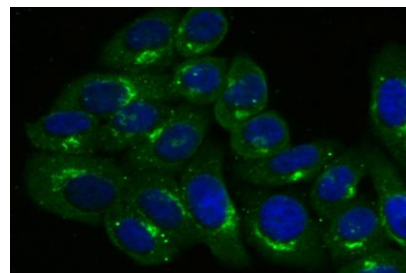


Western blot analysis of GRASP65 on different cell lysates using anti-GRASP65 at 1/500 dilution.

Positive control:

Line 1: THP-1

Line 2: SKBR3



ICC staining GRASP65 in HepG2 cells (green). The nuclear counter stain is DAPI (blue). Cells were fixed in paraformaldehyde, permeabilised with 0.25% Triton X100/PBS.

Note:

For research use only, not for use in diagnostic procedure.

Bioworld Technology, Inc.

Add: 1660 South Highway 100, Suite 500 St. Louis Park, MN 55416, USA.

Email: info@bioworld.com

Tel: 6123263284

Fax: 6122933841

Bioworld technology, co. Ltd.

Add: No 9, weidi road Qixia District Nanjing, 210046, P. R. China.

Email: info@biogot.com

Tel: 0086-025-68037686

Fax: 0086-025-68035151