

## GTSF1 polyclonal antibody

Catalog: BS90609

Host: Rabbit

Reactivity: Zebrafish

### BackGround:

Gametocyte-specific factor 1 (Gtsf1), also known as the computationally obtained undifferentiated and/or embryonic stem cell-specific 110 gene (Cue110). Gtsf1 encodes a 167-amino acid protein that is a member of the Uncharacterized Protein Family 0224. DmGTSF1 is essential for P-element-induced wimpy testis (PIWI)-interacting RNA (piRNA)-mediated transcriptional repression and histone H3K9me3-mediated repression of transposons and their neighboring genes in the ovary. DmGTSF1 interacts with Piwi via its C-terminal tail and the two CHHC zinc-finger motifs within the DmGTSF1 protein are required for its activity. The Gtsf1 gene is essential for spermatogenesis and has been revealed to function in transposon suppression in the mouse testes. GTSF1 transcript expression has been observed to be up-regulated in certain leukemias and in lymphomas.

### Product:

Rabbit IgG, 1mg/ml in PBS with 0.02% sodium azide, 50% glycerol, pH7.2

### Molecular Weight:

35 kDa, predicted band size 21 kDa

### Swiss-Prot:

K4FBI1 Zebrafish

### Purification&Purity:

Protein affinity purified.

### Applications:

WB:1:200

IF:1:50-1:200

IHC:1:50-1:200

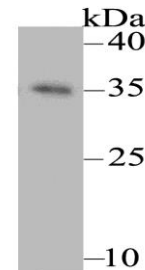
### Storage&Stability:

Store at +4°C after thawing. Aliquot store at -20°C. Avoid repeated freeze / thaw cycles.

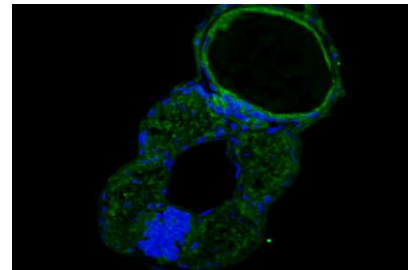
### Specificity:

GTSF1 polyclonal antibody detects endogenous levels of GTSF1 protein.

### DATA:



Western blot analysis of GTSF1 on zebrafish lysate. Proteins were transferred to a PVDF membrane and blocked with 5% BSA in PBS for 1 hour at room temperature. The primary antibody was used at a 1:200 dilution in 5% BSA at room temperature for 2 hours. Goat Anti-Rabbit IgG - HRP Secondary Antibody (HA1001) at 1:5,000 dilution was used for 1 hour at room temperature.



Immunofluorescence staining of paraffin-embedded Zebrafish using anti-GTSF1 rabbit polyclonal antibody. The section was pre-treated using heat mediated antigen retrieval with Tris-EDTA buffer (pH 9.0) for 20 minutes. The tissues were blocked in 10% negative goat serum for 1 hour at room temperature, washed with PBS, and then probed with ER1803-68 at 1/50 dilution for 10 hours at 4°C and detected using Alexa Fluor® 488 conjugate-Goat anti-Rabbit IgG (H+L) Secondary Antibody at a dilution of 1:500 for 1 hour at room temperature.

### Note:

For research use only, not for use in diagnostic procedure.

### Bioworld Technology, Inc.

Add: 1660 South Highway 100, Suite 500 St. Louis Park, MN 55416, USA.

Email: [info@bioworld.com](mailto:info@bioworld.com)

Tel: 6123263284

Fax: 6122933841

### Bioworld technology, co. Ltd.

Add: No 9, weidi road Qixia District Nanjing, 210046, P. R. China.

Email: [info@biogot.com](mailto:info@biogot.com)

Tel: 0086-025-68037686

Fax: 0086-025-68035151



## PRODUCT DATA SHEET

Bioworld Technology, Inc.

---

---

### **Bioworld Technology, Inc.**

**Add:** 1660 South Highway 100, Suite 500 St. Louis Park,  
MN 55416, USA.

**Email:** [info@bioworld.com](mailto:info@bioworld.com)

**Tel:** 6123263284

**Fax:** 6122933841

### **Bioworld technology, co. Ltd.**

**Add:** No 9, weidi road Qixia District Nanjing, 210046,  
P. R. China.

**Email:** [info@biogot.com](mailto:info@biogot.com)

**Tel:** 0086-025-68037686

**Fax:** 0086-025-68035151