

HE4 polyclonal antibody

Catalog: BS90626

Host: Rabbit

Reactivity: Human, Mouse

BackGround:

HE4 (whey acidic protein (WAP)-type four-disulfide core-2, WFDC2) is a small secretory protein that may influence sperm maturation. HE4 gene expression is high in pulmonary epithelial cells and in some ovarian cancers. HE4 protein has a WAP motif that contains eight cysteines forming four disulfide bonds at the core of the protein. The WAP motif functions as a protease inhibitor in many of the family members that contain them.

Product:

Rabbit IgG, 1mg/ml in PBS with 0.02% sodium azide, 50% glycerol, pH7.2

Molecular Weight:

23 kDa

Swiss-Prot:

Q14508(Human) Q9DAU7(Mouse)

Purification&Purity:

ProA affinity purified

Applications:

WB:1:1,000-1:2,000

ICC:1:50-1:200

IHC:1:50-1:200

FC:1:50-1:100

Storage&Stability:

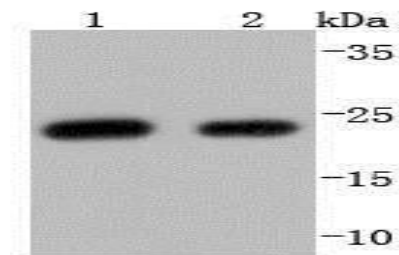
Store at +4 °C after thawing. Aliquot store at -20 °C or -80 °C. Avoid repeated freeze / thaw cycles.

Specificity:

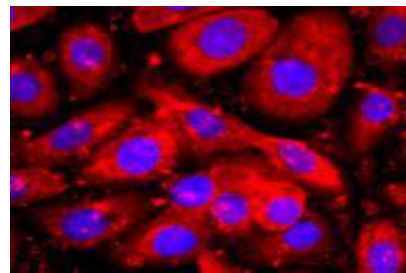
HE4 polyclonal antibody detects endogenous levels of

HE4 protein.

DATA:



Western blot analysis of HE4 on different lysates using anti-HE4 antibody at 1/1,000 dilution. Positive control: Lane 1: SW480 Lane 2: SKOV-3



ICC staining HE4 in SKOV-3 cells (red). The nuclear counter stain is DAPI (blue). Cells were fixed in paraformaldehyde, permeabilised with 0.25% Triton X100/PBS.

Note:

For research use only, not for use in diagnostic procedure.

Bioworld Technology, Inc.

Add: 1660 South Highway 100, Suite 500 St. Louis Park, MN 55416, USA.

Email: info@bioworld.com

Tel: 6123263284

Fax: 6122933841

Bioworld technology, co. Ltd.

Add: No 9, weidi road Qixia District Nanjing, 210046, P. R. China.

Email: info@biogot.com

Tel: 0086-025-68037686

Fax: 0086-025-68035151