

HEC1 polyclonal antibody

Catalog: BS90627

Host: Rabbit

Reactivity: Human

BackGround:

Acts as a component of the essential kinetochore-associated NDC80 complex, which is required for chromosome segregation and spindle checkpoint activity. Required for kinetochore integrity and the organization of stable microtubule binding sites in the outer plate of the kinetochore. The NDC80 complex synergistically enhances the affinity of the SKA1 complex for microtubules and may allow the NDC80 complex to track depolymerizing microtubules. Plays a role in chromosome congression and is essential for the end-on attachment of the kinetochores to spindle microtubules.

Product:

Rabbit IgG, 1mg/ml in PBS with 0.02% sodium azide, 50% glycerol, pH7.2

Molecular Weight:

74 kDa

Swiss-Prot:

O14777(Human)

Purification&Purity:

Protein affinity purified.

Applications:

WB:1:500

FC:1:50-1:100

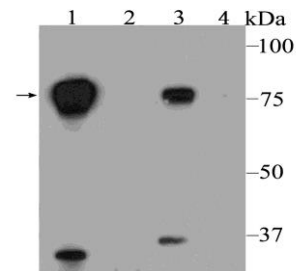
Storage&Stability:

Store at +4 °C after thawing. Aliquot store at -20 °C. Avoid repeated freeze / thaw cycles.

Specificity:

HEC1 polyclonal antibody detects endogenous levels of HEC1 protein.

DATA:

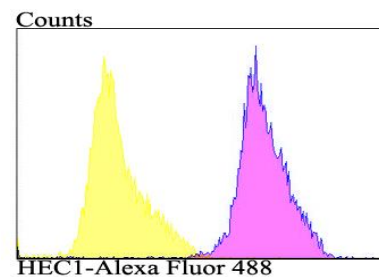


Western blot analysis of HEC1 on SiHa (1,2) and HL-60 (3,4) cell lysates using anti-HEC1 antibody at 1/500 dilution.

Positive control:

Lane 1, 3: Anti-HEC1 antibody

Lane 2, 4: Anti-HEC1 antibody, with immunization Recombinant protein



Flow cytometric analysis of MG-63 cells with HEC1 antibody at 1/100 dilution (purple) compared with an unlabelled control (cells without incubation with primary antibody; yellow). Alexa Fluor 488-conjugated goat anti-rabbit IgG was used as the secondary antibody.

Note:

For research use only, not for use in diagnostic procedure.

Bioworld Technology, Inc.

Add: 1660 South Highway 100, Suite 500 St. Louis Park, MN 55416, USA.

Email: info@bioworld.com

Tel: 6123263284

Fax: 6122933841

Bioworld technology, co. Ltd.

Add: No 9, weidi road Qixia District Nanjing, 210046, P. R. China.

Email: info@biogot.com

Tel: 0086-025-68037686

Fax: 0086-025-68035151