

## Hemopexin polyclonal antibody

Catalog: BS90628

Host: Rabbit

Reactivity: Human

### BackGround:

Hemopexin (also known as  $\beta$  1B glycoprotein or HPX), a 462 amino acid protein, functions as a scavenger and transporter of toxic plasma heme, transporting heme to the liver for breakdown and iron recovery. Hemopexin cooperates with Albumin, Haptoglobin, and high and low density lipoproteins to trap toxic plasma heme, which occurs as the result of the degradation of hemoglobin, myoglobin and enzymes with heme prosthetic groups, and to ensure the clearance of toxic heme from the plasma. After releasing the heme molecule, the free Hemopexin returns to circulation. It is expressed by the liver and is secreted in plasma. Hemopexin may play a role in the maintenance of metal ion homeostasis. It binds the following metal ions in order of highest to lowest affinity: nickel, copper, cobalt, zinc and manganese. Hemopexin can also act as a toxic protease that leads to proteinuria and glomerular alterations, which are characteristics of minimal changes disease (MCD), a common cause of nephrotic syndrome.

### Product:

Rabbit IgG, 1mg/ml in PBS with 0.02% sodium azide, 50% glycerol, pH7.2

### Molecular Weight:

52 kDa

### Swiss-Prot:

P02790(Human)

### Purification&Purity:

ProA affinity purified

### Applications:

WB:1:500-1:2,000

ICC:1:50-1:200

IHC:1:100-1:500

IP:1:10-1:50

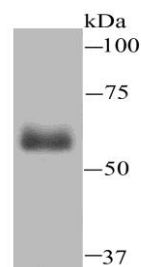
### Storage&Stability:

Store at +4 °C after thawing. Aliquot store at -20 °C or -80 °C. Avoid repeated freeze / thaw cycles.

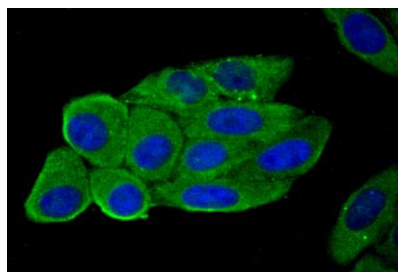
### Specificity:

Hemopexin polyclonal antibody detects endogenous levels of Hemopexin protein.

### DATA:



Western blot analysis of Hemopexin on human plasma lysate using anti-Hemopexin antibody at 1/500 dilution.



ICC staining Hemopexin in HepG2 cells (green). The nuclear counter stain is DAPI (blue). Cells were fixed in paraformaldehyde, permeabilised with 0.25% Triton X100/PBS.

### Note:

For research use only, not for use in diagnostic procedure.

### Bioworld Technology, Inc.

Add: 1660 South Highway 100, Suite 500 St. Louis Park, MN 55416, USA.

Email: [info@bioworld.com](mailto:info@bioworld.com)

Tel: 6123263284

Fax: 6122933841

### Bioworld technology, co. Ltd.

Add: No 9, weidi road Qixia District Nanjing, 210046, P. R. China.

Email: [info@biogot.com](mailto:info@biogot.com)

Tel: 0086-025-68037686

Fax: 0086-025-68035151