

HKDC1 polyclonal antibody

Catalog: BS90646

Host: Rabbit

Reactivity: Human, Mouse, Rat

Background:

As the recently identified fifth isoform of hexokinase, HKDC1 catalyzes the rate-limiting and first obligatory step of glucose metabolism, which is the ATP-dependent phosphorylation of glucose to G6P. Though its particular biological function remains unclear, HKDC1 has been suggested to play a more major role in glucose metabolism during pregnancy, as the mother would need to provide enough energy for both herself and the fetus. HKDC1 is ubiquitously expressed, with the highest levels of expression in pharynx, thymus, colon, esophagus, and eye tissue.

Product:

Rabbit IgG, 1mg/ml in PBS with 0.02% sodium azide, 50% glycerol, pH7.2

Molecular Weight:

82/90/102 kDa

Swiss-Prot:

Q2TB90(Human) Q91W97(Mouse)

Purification&Purity:

Protein affinity purified.

Applications:

WB:1:500

ICC:1:50-1:200

IHC:1:50-1:200

FC:1:50-1:100

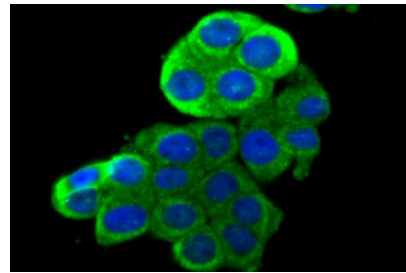
Storage&Stability:

Store at +4 °C after thawing. Aliquot store at -20 °C. Avoid repeated freeze / thaw cycles.

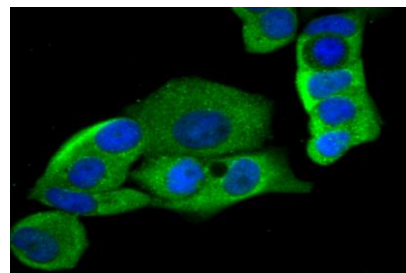
Specificity:

HKDC1 polyclonal antibody detects endogenous levels of HKDC1 protein.

DATA:



ICC staining HKDC1 in LOVO cells (green). The nuclear counter stain is DAPI (blue). Cells were fixed in paraformaldehyde, permeabilised with 0.25% Triton X100/PBS.



ICC staining HKDC1 in MCF-7 cells (green). The nuclear counter stain is DAPI (blue). Cells were fixed in paraformaldehyde, permeabilised with 0.25% Triton X100/PBS.

Note:

For research use only, not for use in diagnostic procedure.

Bioworld Technology, Inc.

Add: 1660 South Highway 100, Suite 500 St. Louis Park, MN 55416, USA.

Email: info@bioworld.com

Tel: 6123263284

Fax: 6122933841

Bioworld technology, co. Ltd.

Add: No 9, weidi road Qixia District Nanjing, 210046, P. R. China.

Email: info@biogol.com

Tel: 0086-025-68037686

Fax: 0086-025-68035151