

## hnRNP K polyclonal antibody

Catalog: BS90656

Host: Rabbit

Reactivity: Human, Mouse, Rat

### BackGround:

Heterogeneous nuclear ribonucleoproteins (hnRNPs) constitute a set of poly-peptides that contribute to mRNA transcription and pre-mRNA processing as well as mature mRNA transport to the cytoplasm and translation. They also bind heterogeneous nuclear RNA (hnRNA), which are the transcripts produced by RNA Polymerase II. There are approximately 20 known hnRNP proteins and their complexes are the major constituents of the spliceosome. The majority of hnRNP protein are localized to the nucleus, however some shuttle between the nucleus and the cytoplasm, such as hnRNP K. hnRNP K recruits a variety of molecular partners through two K homologous (KH) domains, which are required for protein-protein interactions. hnRNP K also contains several potential phosphorylation sites, including Ser 302, the major site of PKCd phosphorylation, which are thought to regulate various cellular functions, including sequence-specific DNA binding, transcription, RNA binding and nucleocytoplasmic shuttling.

### Product:

Rabbit IgG, 1mg/ml in PBS with 0.02% sodium azide, 50% glycerol, pH7.2

### Molecular Weight:

60 kDa

### Swiss-Prot:

P61978(Human) P61979(Mouse) P61980(Rat)

### Purification&Purity:

ProA affinity purified

### Applications:

WB:1:1,000-1:5,000

ICC:1:50-1:200

IHC:1:50-1:200

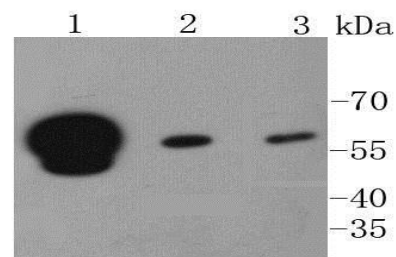
### Storage&Stability:

Store at +4 °C after thawing. Aliquot store at -20 °C or -80 °C. Avoid repeated freeze / thaw cycles.

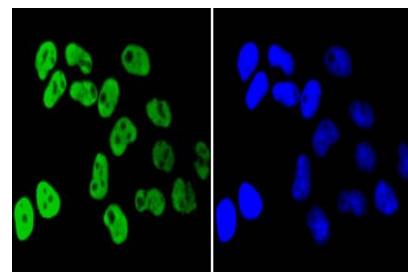
### Specificity:

hnRNP K polyclonal antibody detects endogenous levels of hnRNP K protein.

### DATA:



Western blot analysis of hnRNP K on different lysates using anti-hnRNP K antibody at 1/1,000 dilution. Positive control: Lane 1: Jurkat Lane 2: HeLa Lane 3: NIH/3T3



ICC staining hnRNP K in HeLa cells (green). The nuclear counter stain is DAPI (blue). Cells were fixed in paraformaldehyde, permeabilised with 0.25% Triton X100/PBS.

### Note:

For research use only, not for use in diagnostic procedure.

### Bioworld Technology, Inc.

Add: 1660 South Highway 100, Suite 500 St. Louis Park, MN 55416, USA.

Email: [info@bioworld.com](mailto:info@bioworld.com)

Tel: 6123263284

Fax: 6122933841

### Bioworld technology, co. Ltd.

Add: No 9, weidi road Qixia District Nanjing, 210046, P. R. China.

Email: [info@biogot.com](mailto:info@biogot.com)

Tel: 0086-025-68037686

Fax: 0086-025-68035151