

## HSD11B1 polyclonal antibody

Catalog: BS90663

Host: Rabbit

Reactivity: Human, Mouse, Rat

### BackGround:

HSD11B1(Corticosteroid 11-beta-dehydrogenase isozyme 1) is also named as HSD11, HSD11L, 11-DH and 11-beta-HSD1. It is a microsomal enzyme, which acts mainly as a NADP(H)- dependent reductase converting inactive cortisone (E) to active cortisol (F), thus regulating intracellular F access to glucocorticoid receptor. This enzyme is widely expressed not only in liver and adipose tissue, but also in adrenal, ovary and decidua. Western blot analysis in human liver, using a specific 11-beta-HSD1 antibody, showed two bands at approximately 34 and 68 kDa confirming the dimeric nature of 11-beta-HSD1 in liver and In omental adipose tissue, an additional band of 50 kDa was strongly expressed.

### Product:

Rabbit IgG, 1mg/ml in PBS with 0.02% sodium azide, 50% glycerol, pH7.2

### Molecular Weight:

32 kDa

### Swiss-Prot:

P28845(Human) P50172(Mouse) P16232(Rat)

### Purification&Purity:

ProA affinity purified

### Applications:

WB:1:500-1:2,000

IHC:1:50-1:200

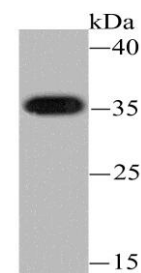
### Storage&Stability:

Store at +4 °C after thawing. Aliquot store at -20 °C or -80 °C. Avoid repeated freeze / thaw cycles.

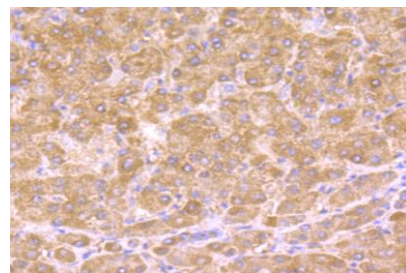
### Specificity:

HSD11B1 polyclonal antibody detects endogenous levels of HSD11B1 protein.

### DATA:



Western blot analysis of HSD11B1 on mouse liver tissue lysate using anti-HSD11B1 antibody at 1/500 dilution.



Immunohistochemical analysis of paraffin-embedded human liver tissue using anti-HSD11B1 antibody. Counter stained with hematoxylin.

### Note:

For research use only, not for use in diagnostic procedure.

### Bioworld Technology, Inc.

Add: 1660 South Highway 100, Suite 500 St. Louis Park, MN 55416, USA.

Email: [info@bioworld.com](mailto:info@bioworld.com)

Tel: 6123263284

Fax: 6122933841

### Bioworld technology, co. Ltd.

Add: No 9, weidi road Qixia District Nanjing, 210046, P. R. China.

Email: [info@biogot.com](mailto:info@biogot.com)

Tel: 0086-025-68037686

Fax: 0086-025-68035151